

- [About](#)
- [Services](#)
- [Projects](#)
- [News](#)
- [Blog](#)
- [Contact](#)

•

Facing the Economic Reality of Sustainable Commercial Aquaculture

What is the number one problem facing the rapid advancement of sustainable aquaculture? For many commercial operations, the answer is simple - bad economics. The hard reality is that, all too often, the bottom line gets in the way of the development of innovative solutions for sustainable aquaculture. But what if there were a system that could actually result in huge operational cost reductions from year one and greater profits on the bottom line? Sound too good to be true? Well then, perhaps you have never heard of duckweed.

What is Duckweed?

Duckweed is the common name for a family of small aquatic herbs known as Lemnaceae that grows in fresh water. They have the unique distinction of being the smallest flowering plants on earth. These plants are also unique in that they do not have any stem or leaf structures. The plant is simply a fleshy ovoid or flattened structure that may or may not bear simple roots. These highly successful plants represent the ultimate in reduction for a vascular plant. Duckweed is ubiquitous to most temperate and tropical regions of the world, making it readily available to most farmers. They are typically found floating in



thick mats of homogeneous populations in quiet streams or ponds containing high levels of organic matter. Another amazing feature of these plants is that they can double their mass in less than two days under ideal conditions of nutrient availability, sunlight and temperature. To put this into perspective, a small patch of duckweed could theoretically cover the entire surface of a 0.5-hectare pond in less than 50 days!

What is the Value of Duckweed to Sustainable Tilapia Culture?

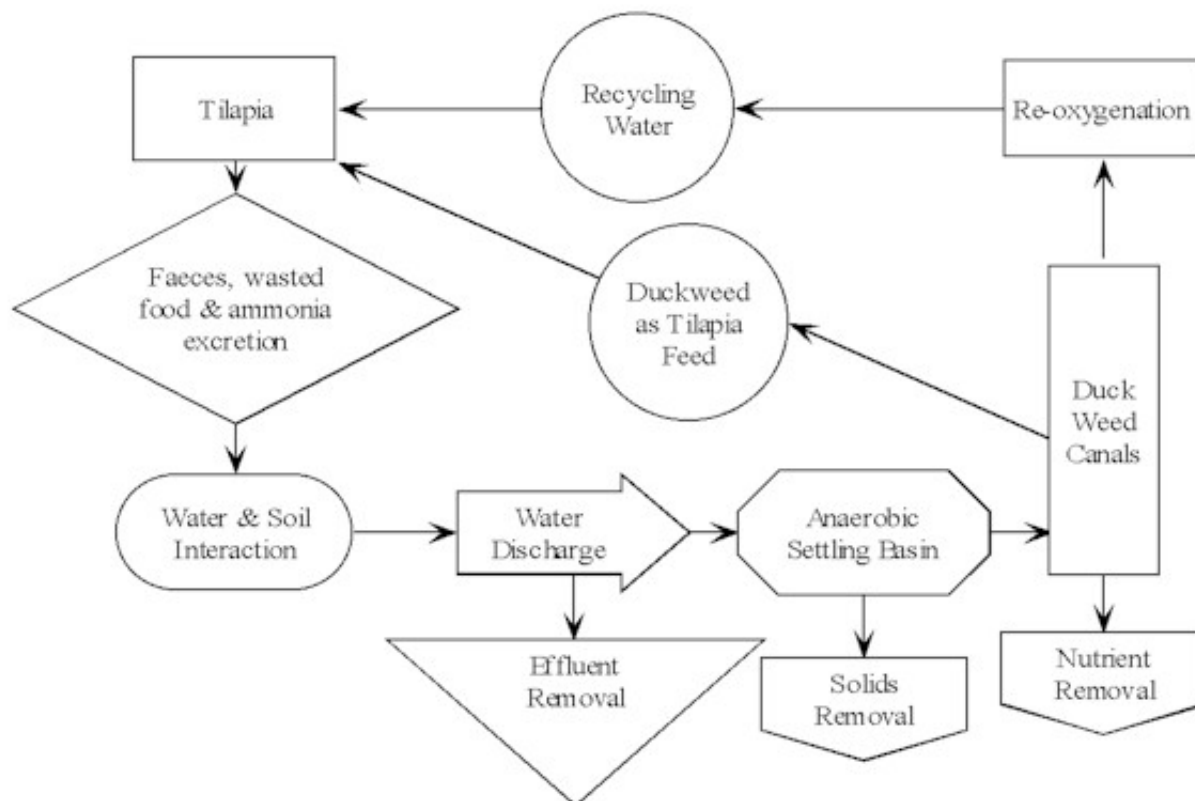
Perhaps the most important feature of these little aquatic plants to freshwater fish culturists is that they are extremely efficient absorbers of ammonia, nitrate, phosphorous, potassium, magnesium, calcium, sodium, chlorine, boron and iron. In a properly designed water recirculation and purification system, duckweed can remove as much as 99% of the nutrients and dissolved solids in wastewater.

Unquestionably, the potential contribution of duckweed to the advancement of sustainable freshwater aquaculture is enormous, yet surprisingly very little research has been done in this area.

The Integrated Tilapia & Duckweed Farming System

In the integrated tilapia and duckweed recirculating system, the fish and the waters of the tilapia growout ponds provide the nutrients upon which the duckweed will thrive. In turn, the duckweed removes unwanted nutrients and waste products from the system, converting the nutrients into plant biomass. This plant biomass, in turn, becomes a high protein food for the tilapias. While all this is going on, water within the integrated system is conserved and purified. The entire system is a natural and sustainable approach to aquaculture.

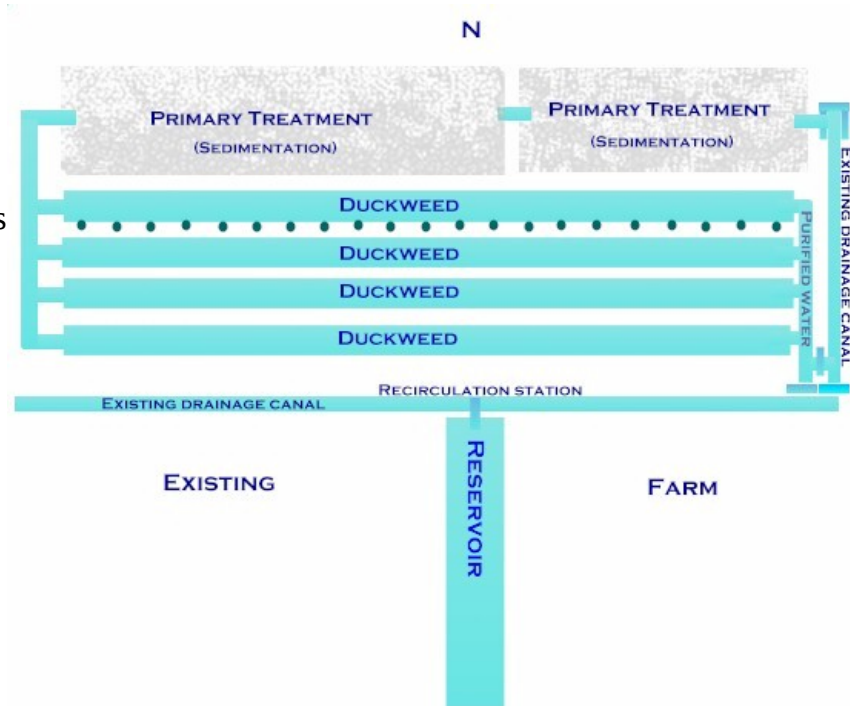
Duckweed & Tilapia Culture Integration



Basic Design Criteria of the Integrated Duckweed Water Recirculation System

Water from the tilapia farm typically enters the first of a series of two sedimentation lagoons. The total detention time of the recirculating water within the sedimentation lagoon will have a direct relationship

to the sedimentation rate. After sedimentation, water is directed into a series of long narrow channels that are fully stocked with duckweed. As the water slowly works its way through this quiescent filtration zone, it becomes purified. Since the water exiting the duckweed zone will be very low in oxygen, there must be careful consideration to the issue of re-oxygenation. The total area devoted to the sedimentation lagoons and the duckweed must be at least 20% of the total growout area. Increasing the percentage of area devoted to water treatment will only serve to improve the overall effectiveness of the nutrient removal process.



Basic Culture Requirements for Duckweed

Duckweed culture requires fairly intensive management for optimum production. Daily attention and frequent harvesting are needed to ensure that the crop is productive, healthy and controlled. The optimal standing crop density of duckweed is between 400 to 800 grams per square meter. Colonies can be effectively managed using floating PVC structures, giving the farmer a dense yet manageable crop. Daily harvesting of the incremental growth is a standard practice. Co-cropping with another water-loving plant provides an added dimension to this highly managed and sustainable system. The chosen plant is planted along the waters edge to serve as wind and direct sunlight barriers for the floating duckweed plots. The shade offered by the waterline plants aids in keeping water temperatures in a favorable range for the duckweed. Either taro, which produces a tuber known as "yucca" or banana plants are ideal crops for many tropical locales. Importantly, these plants can provide additional revenues to the operation and further maximize the utilization of the farm's valuable water resources.

The Potential Value of Duckweed as a Supplemental Tilapia Feed

One of the most important benefits of the duckweed produced in the integrated system is that it can be used as a readily accepted supplemental feed for the tilapias. Grown under ideal conditions, duckweed can have protein levels as high as 35-45 %. Duckweed protein has high concentrations of the essential amino acids lysine and methionine and is also high in trace minerals and pigments. Generally speaking, the overall nutrient characteristics are quite similar to those of soybeans. Fresh duckweed can be fed directly to the tilapias or it can be dried and incorporated into a custom pelleted feed. As shown below, the cost savings associated with utilization of duckweed as an alternative food source can be very significant.

Potential Feed Savings Through the Use of Duckweed

- Assumed full production level (metric tons) = 1,000
- Assumed feed conversion ratio (FCR) = 2:1

- Total amount of pelleted floating feed required (kg's) = 1,700,000
- Cost of pelleted floating feed (\$/kg) \$ 0.45 Total cost of pelleted floating feed (kg's) = \$ 765,000
- Gross savings at 10% substitution level = \$ 76,500
- Gross savings at 25% substitution level = \$ 191,250
- Gross savings at 50% substitution level = \$ 382,500
- Gross savings at 75% substitution level = \$ 573,550

While many of the proposed solutions for sustainability in the aquaculture industry are conveniently being criticized for being too costly, here is a system that has the potential to pay for itself through significant and sustainable reductions in operational expenses. This is the beauty and promise of the integrated tilapia and duckweed culture system.

NAVIGATION

- [About](#) Meet our team!
- [Services](#) A full range of expertise.
- [Projects](#) Examples of our work.
- [News](#) Company Updates
- [Blog](#) What's new at AquaSol.
- [Contact](#) Let's get started!

FROM THE BLOG

[Fishing for Solid Returns: A Few Keys to Successful Investments in Aquaculture](#) Aquaculture is a great way for qualified investors who are not risk averse to diversify part of their portfolios away from traditional investments. Aquaculture is... [Read more](#)
[More Blog Posts](#)

CONNECT

PO Box 14-1938
Coral Gables, FL (USA)
33114-1938

[CONTACT info@fishfarming.com](mailto:info@fishfarming.com)

+1 (305) 662 7134



Copyright © 2015. All rights reserved.

[Privacy Policy](#) | [Terms & Conditions](#)

[Web Design](#) by Boxcar Studio [Michigan Web Design](#) by Boxcar Studio