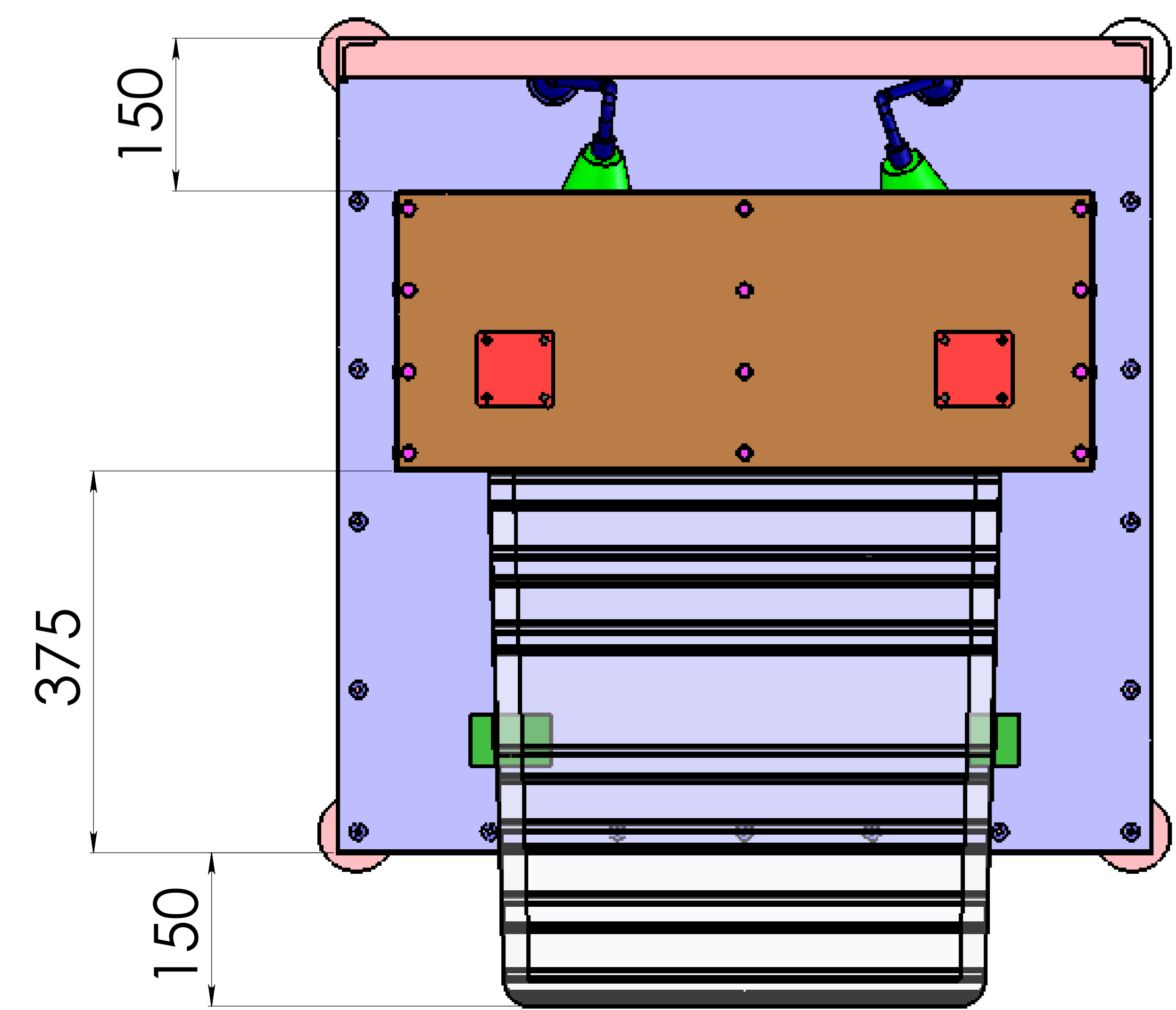
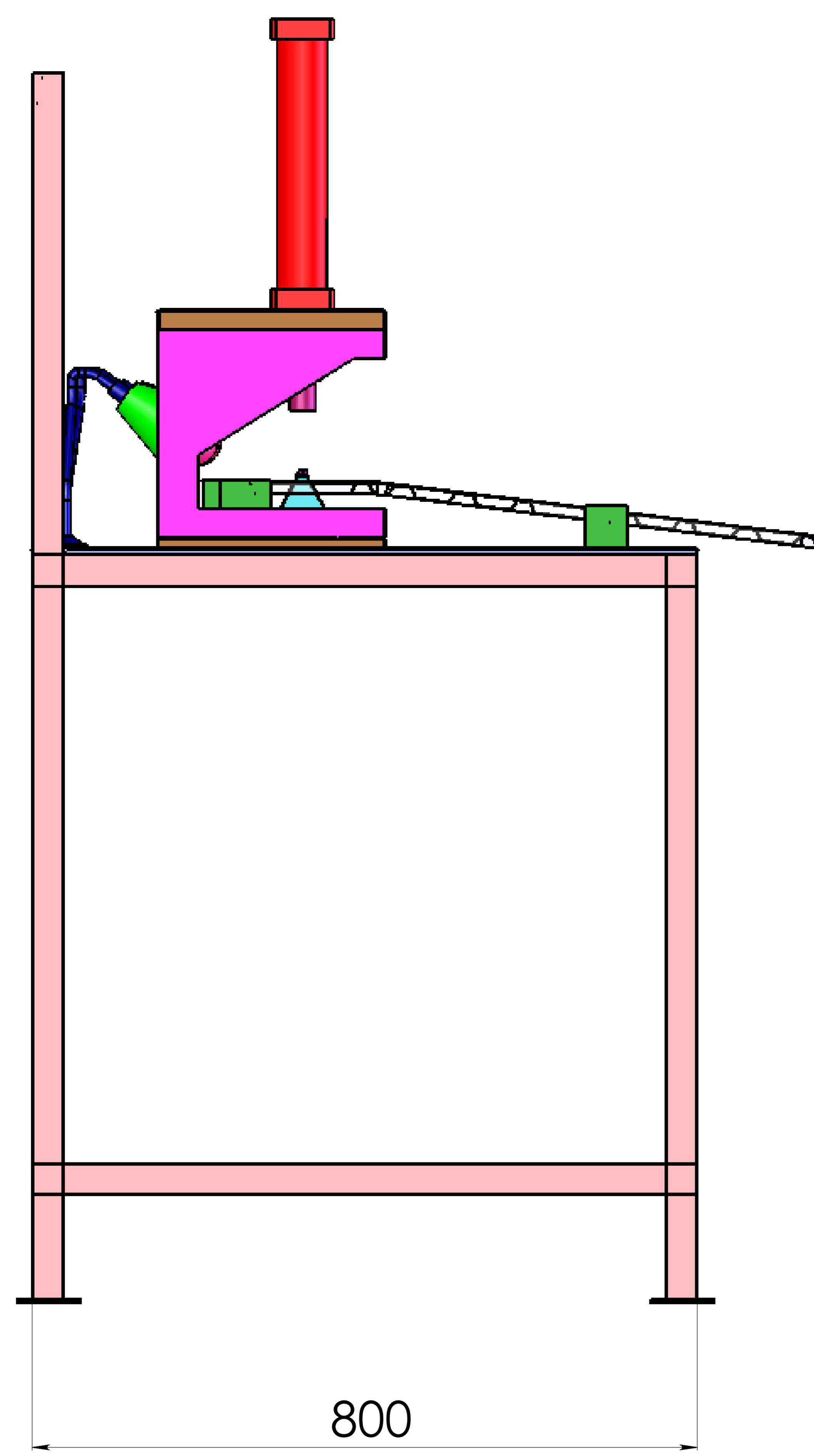
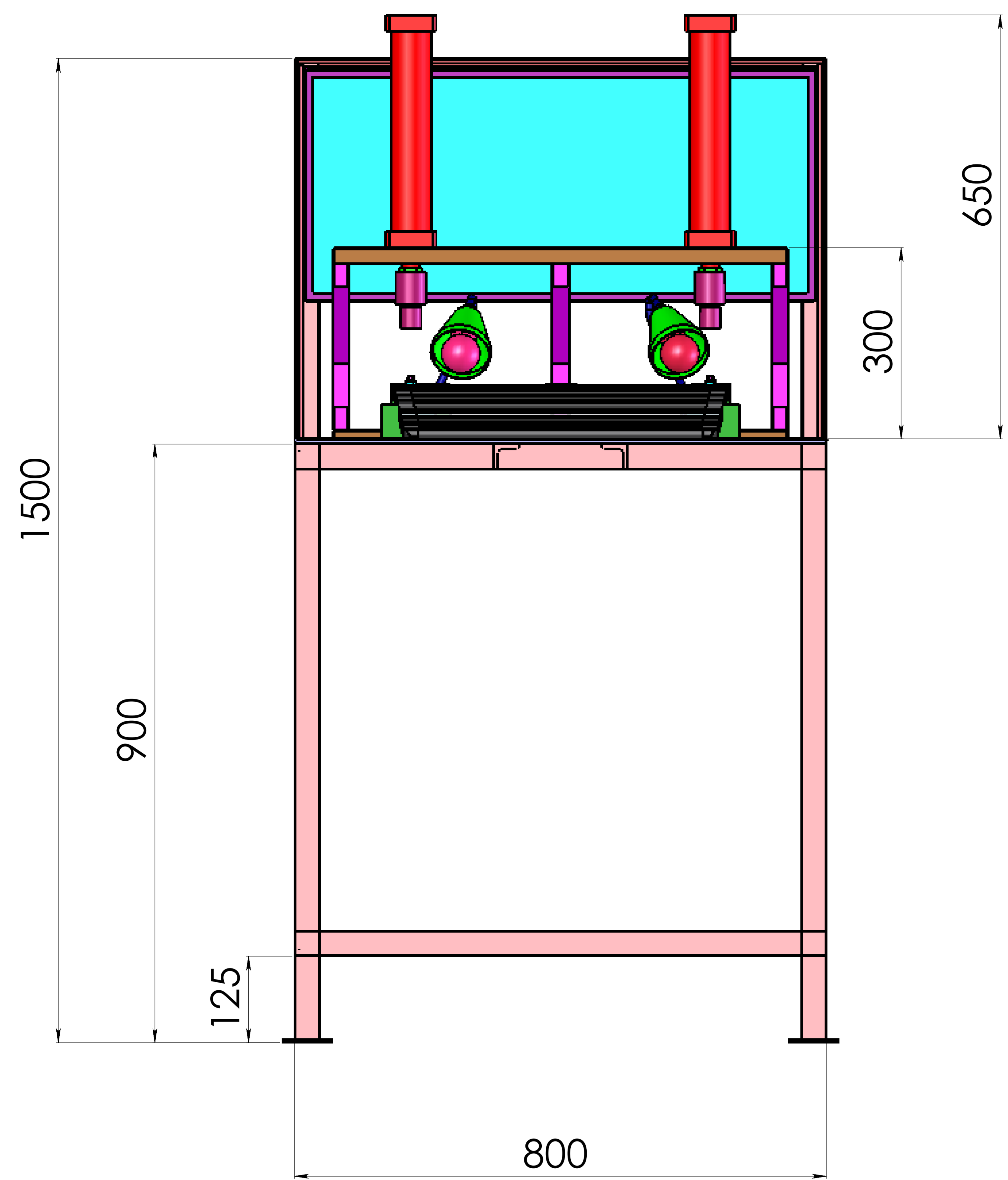


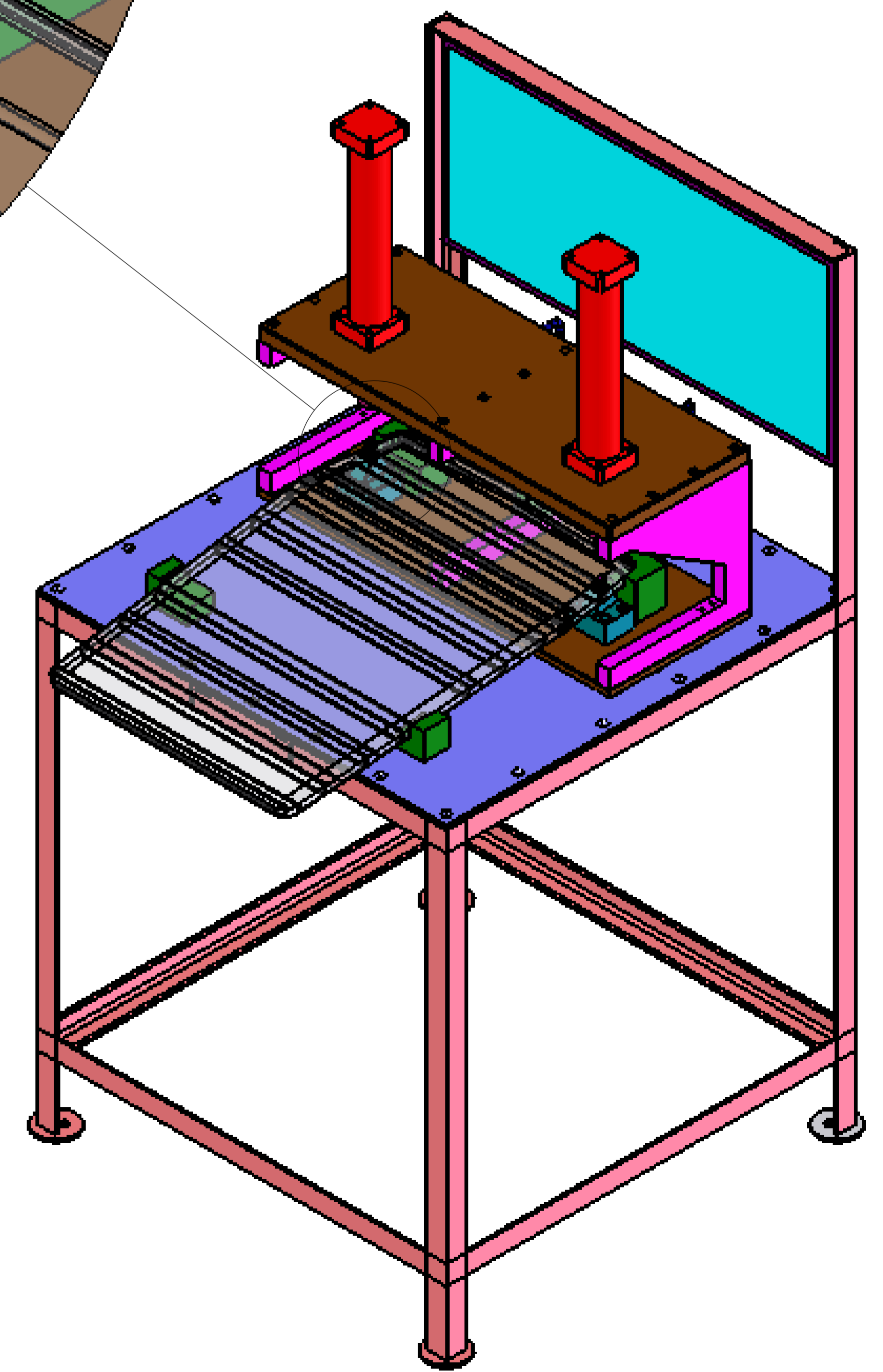
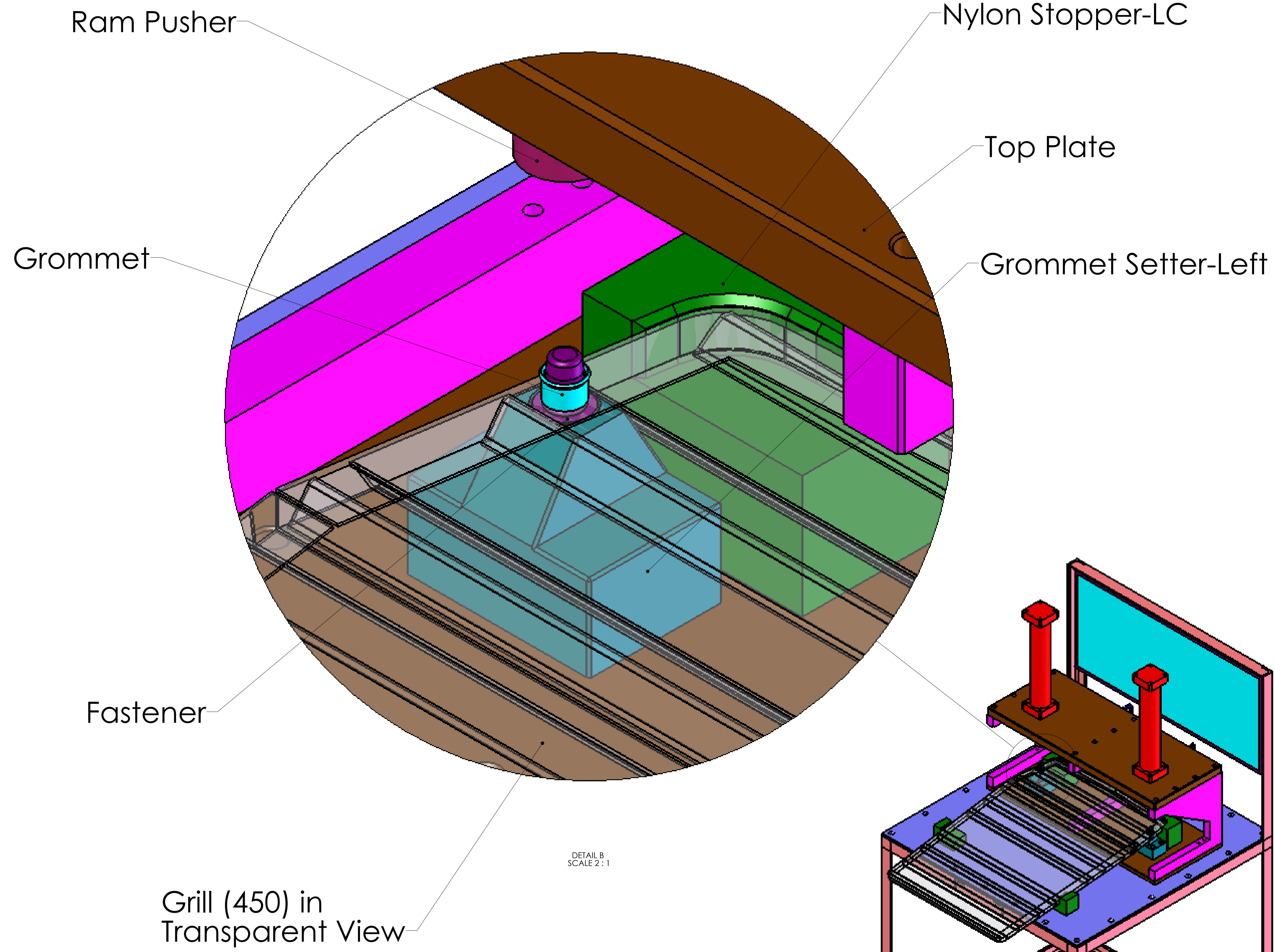
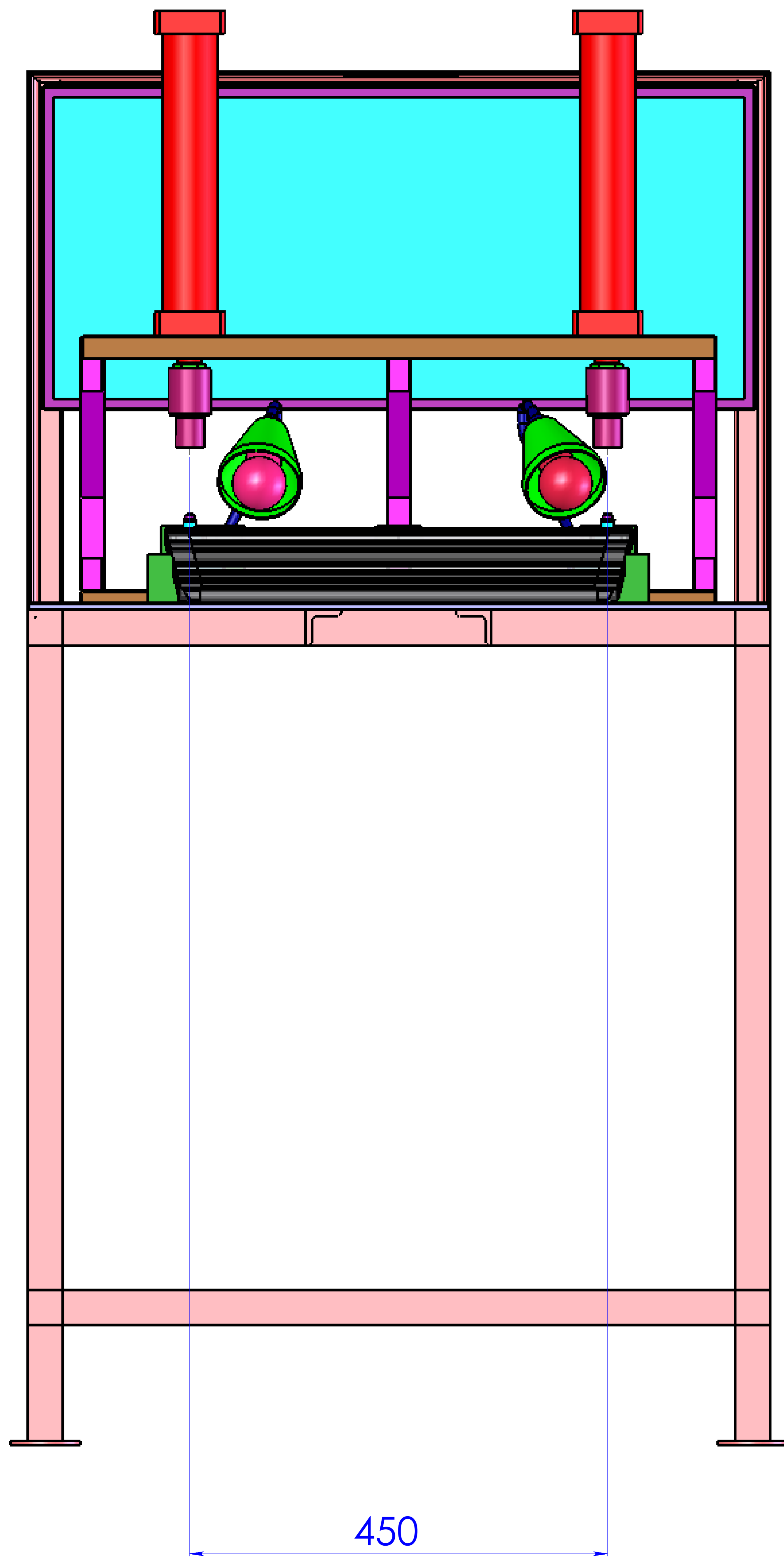
ITEM NO.	PART NAME	PART NUMBER	QTY.
1	Top Plate	KMPGRP001	1
2	Bottom Plate-Table	KMPGRP002	1
3	C Plate	KMPGRP003	3
4	Bottom Plate	KMPGRP004	1
5	Grommet Setter-Right	KMPGRP005	1
6	Ram Pusher 1	KMPGRP006	2
7	Nylon Stopper-End	KMPGRP007	1
8	Nylon Stopper-Left	KMPGRP008	1
9	Nylon Stopper-Right	KMPGRP009	1
10	Table	KMPGRP010	1
11	Hydro-Pneumatics		2
12	Notice Board		1
13	Light		2
14	Nylon Stopper-RC	KMPGRP011	1
15	Nylon Stopper-LC	KMPGRP012	1
16	Grommet setter-Left	KMPGRP013	1



DATE/COMPONENT SPECIFIED:		PRINT	DO NOT SCALE DRAWING		REVISION
DIMENSIONS ARE IN MILLIMETERS UNLESS SPECIFIED OTHERWISE					
UNITS TO BE USED:					
LENGTH					
AREA					
VOLUME					
NO.	NAME	SIGNATURE	DATE		
1	DESIGNER		17/11		
2	CHECKER				
3	APPROVER				
4	MIS				
5	QA				
MATERIAL					
WEIGHT					
SCALE IS					
SHEET NO.					

Kalki Mechanical Prototypes Pvt Ltd  
 No. 493 Main Road, Nattai Nagar,  
 Kanchi, Madurai-620116,  
 Tamil Nadu, INDIA.

**Grill Rivetting assembly**  
 DWG NO: KMPGRA001 A0



DATE/REVISION	BY	CHKD	DATE	REVISION
17.11.11	PRINCE			1

NO.	DESCRIPTION	DATE
1	DESIGN	17.11.11
2	CHKD	
3	APP'D	
4	MA	

NAME	DATE
PRINCE	17.11.11

DO NOT SCALE DRAWING	REVISION

Kalki Mechanical Prototypes Pvt Ltd  
No. 149 Main Road, Nattai Nagar,  
Kochadai, Madurai-625016,  
Tamil Nadu, INDIA

Grill Rivetting Assembly

DWG NO: KMPGRA001

SCALE: 1:1

SHEET 3 OF 3