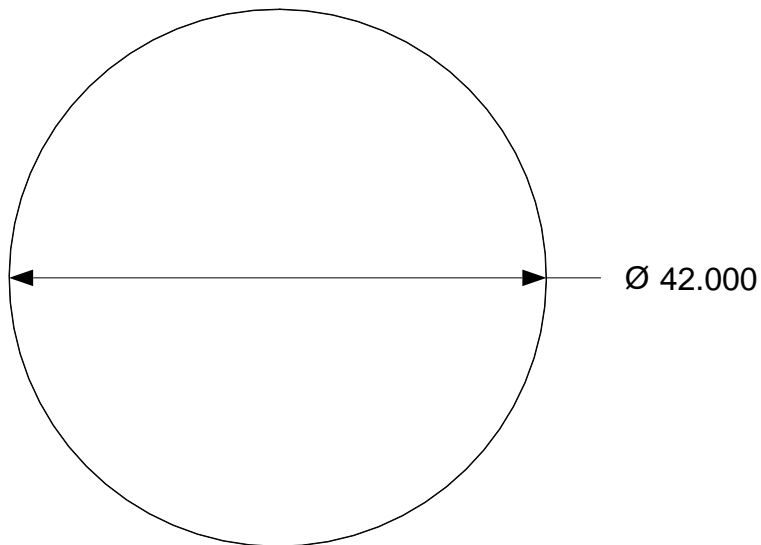
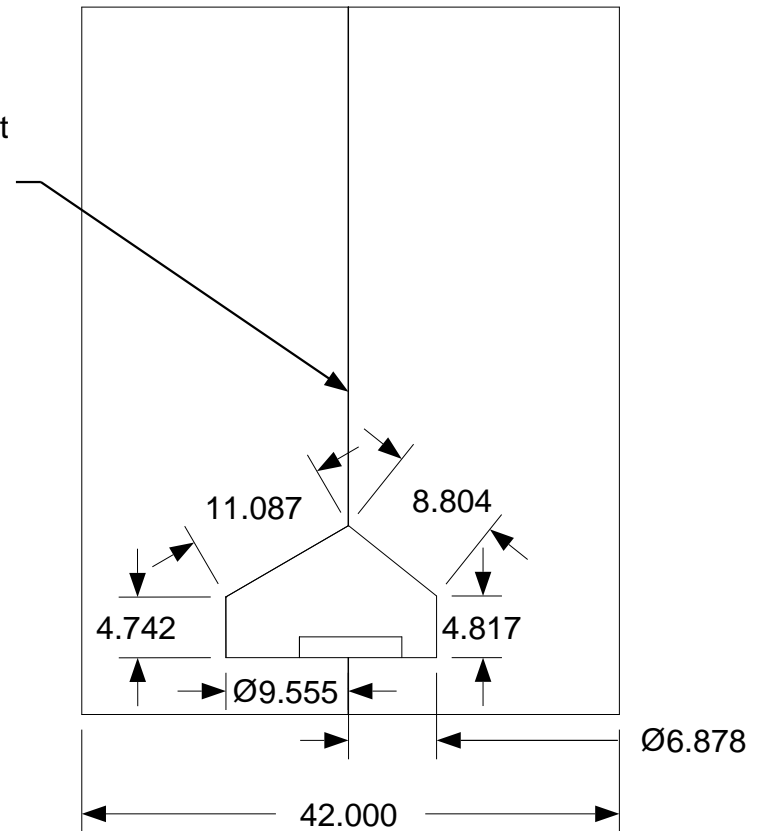
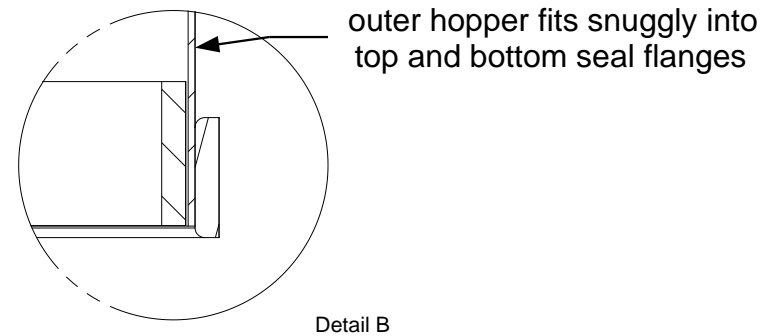
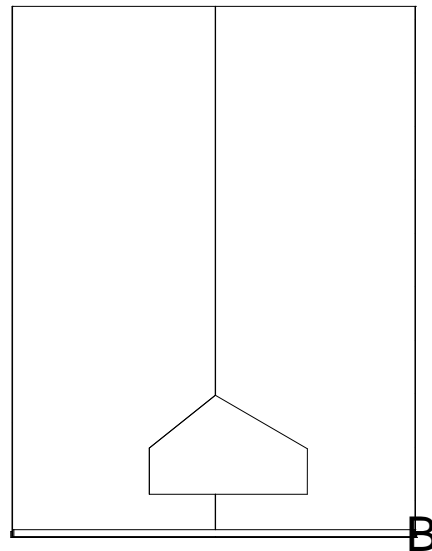
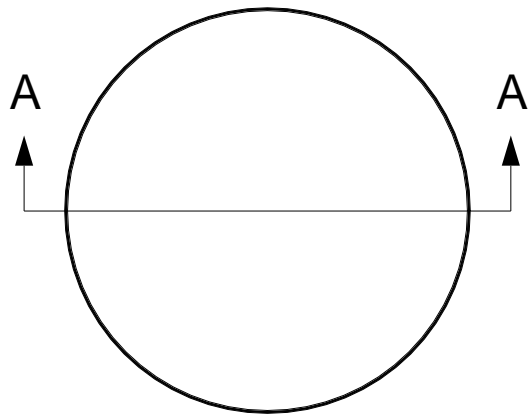
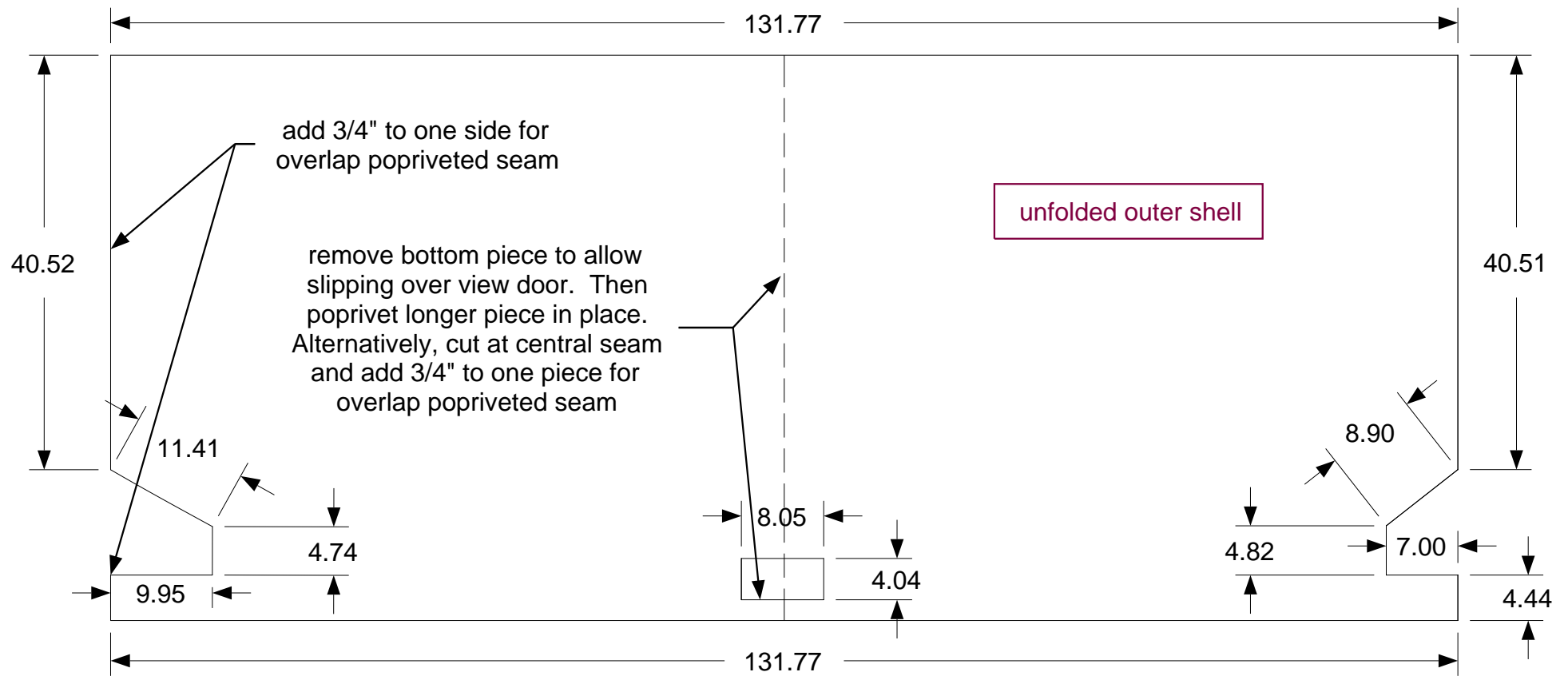


seam aligns with exhaust
plenum cutout
(add 0.75" for overlap
popriveted seam)



DESCRIPTION - NOTES			
20 ga. (.036") mild steel			
SIZE	DATE	DWG NAME	REV
A	12/14/11	outer shell.icd	
SCALE		drawn by Larry Dobson	SHEET



DESCRIPTION - NOTES

see unfolded outer shell-CNC.dxf for CNC cutout
(add material for overlap popriveted seam)

SIZE	DATE	DWG NAME	REV
A	1/1/08	outer shell.icd	
SCALE	drawn by Larry Dobson		SHEET