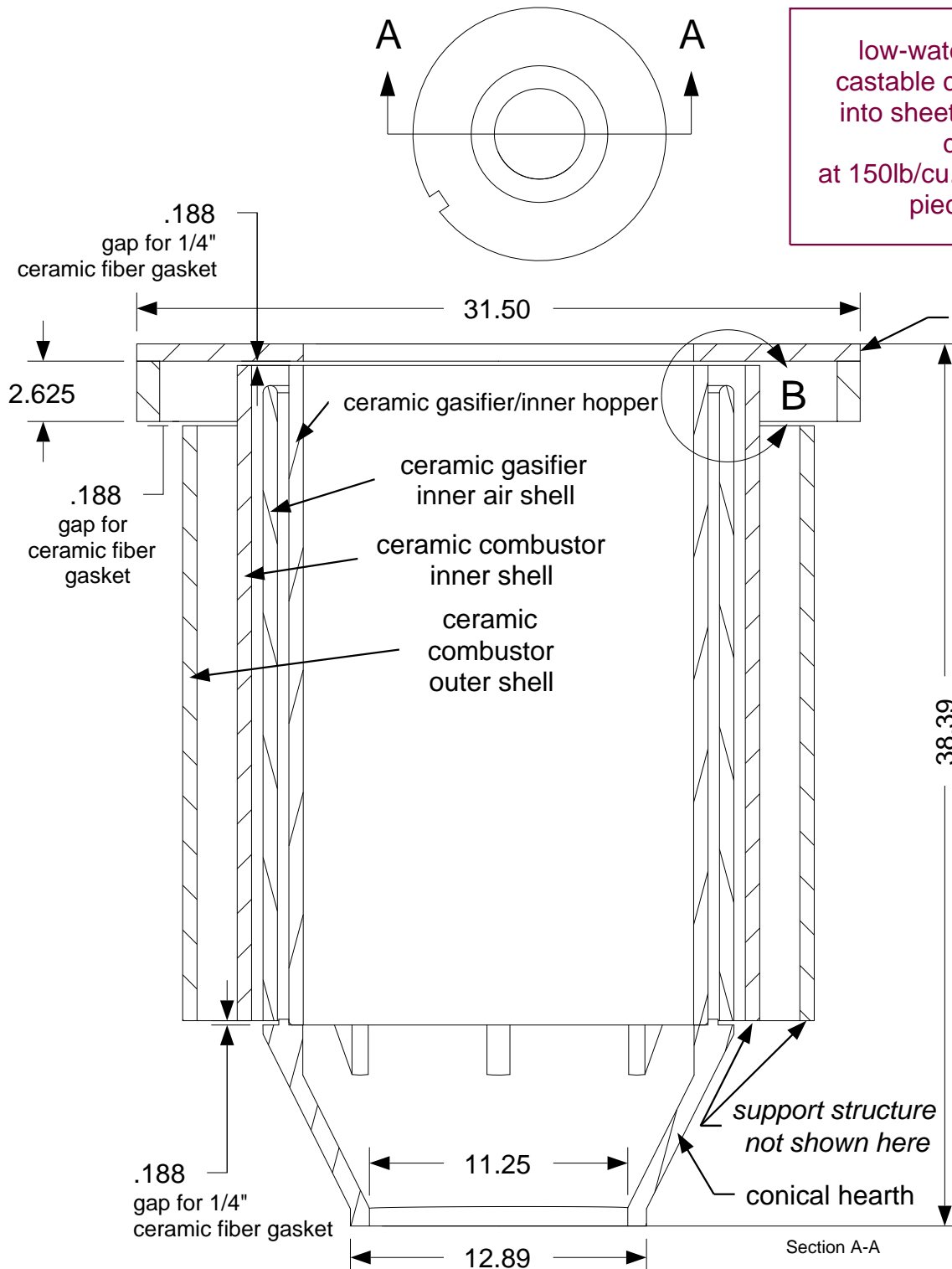
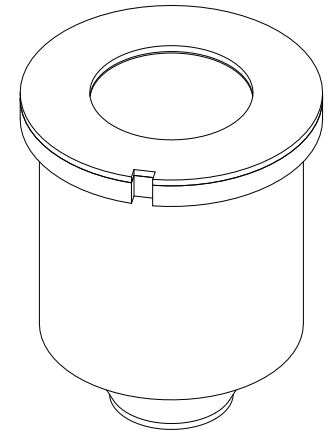
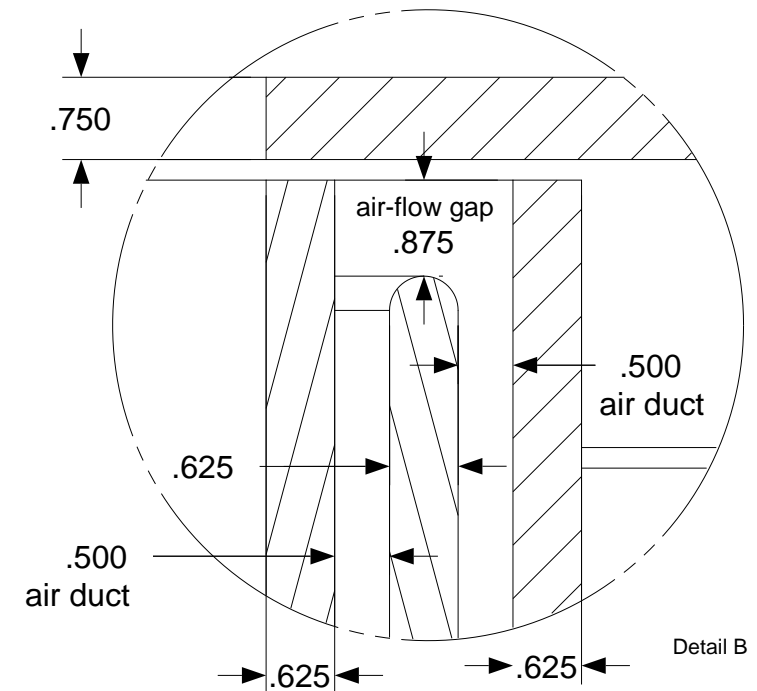


low-water low-cement vibrating
castable ceramic is vibrated evenly
into sheetmetal molds with a small
concrete stinger.
at 150lb/cu.ft., total weight of ceramic
pieces is around 496lb



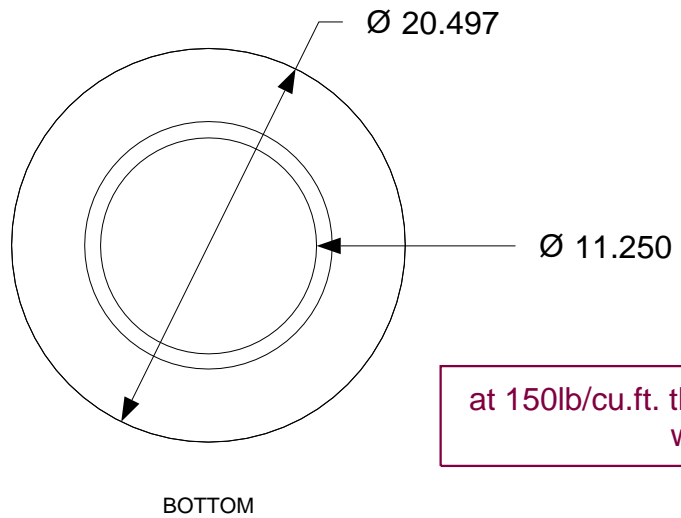
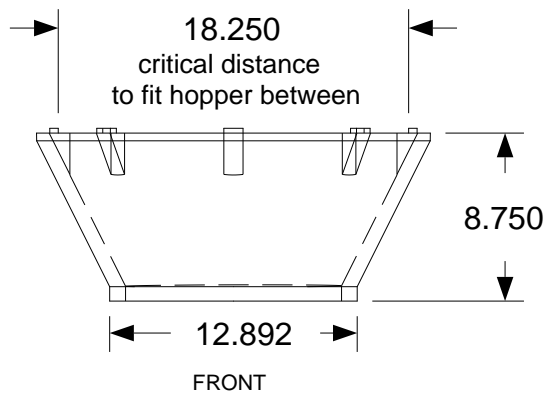
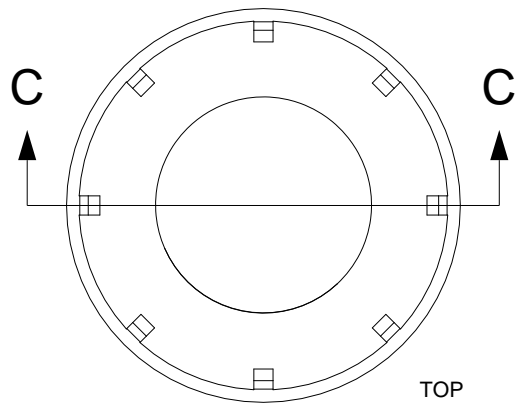
ceramic exhaust
transition lid
cast in one piece



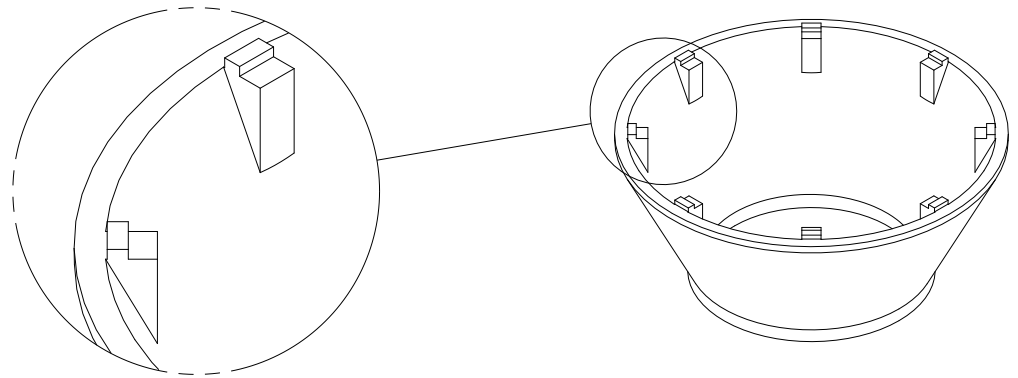
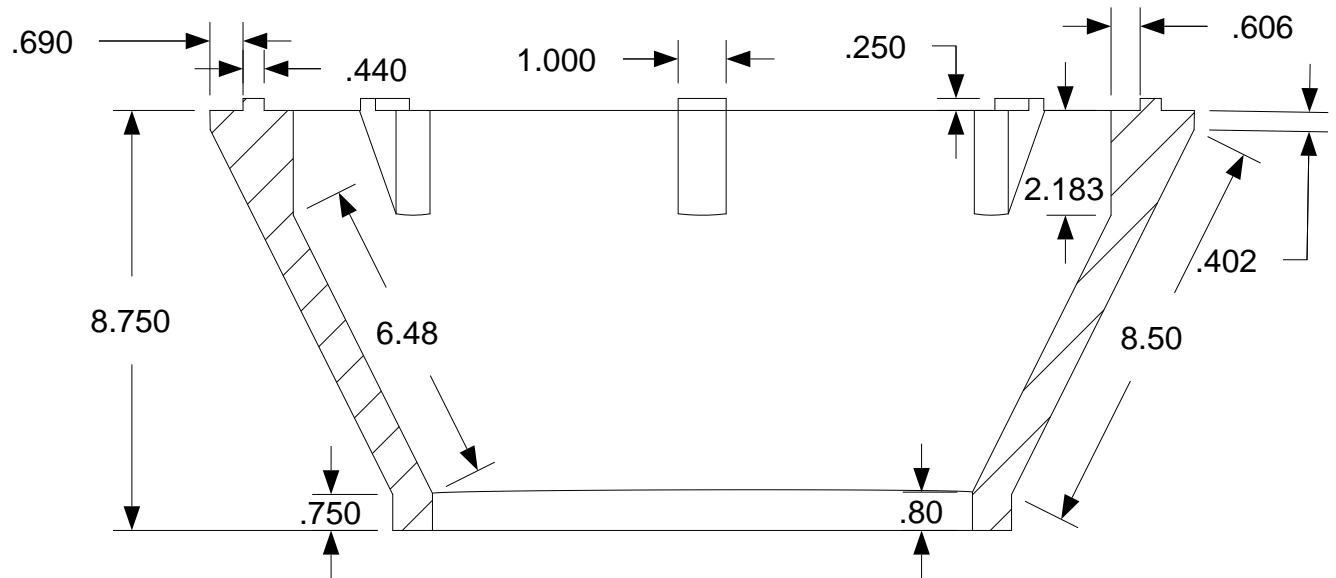
DESCRIPTION - NOTES

use low-water low-cement vibrating
castable ceramic rated for 3000°F

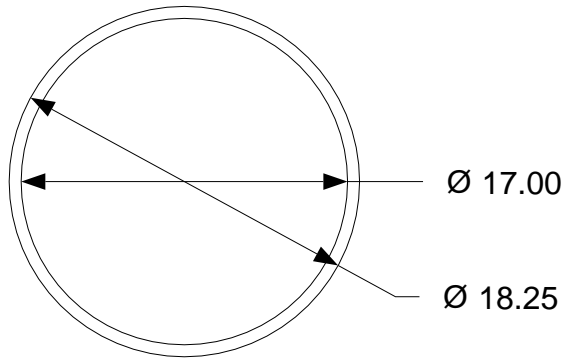
SIZE	DATE	DWG NAME	REV
A	12/10/11	Refractory Ceramic Parts.icd	
SCALE	drawn by Larry Dobson		SHEET



at 150lb/cu.ft. the ceramic conical hearth
weighs 32lb

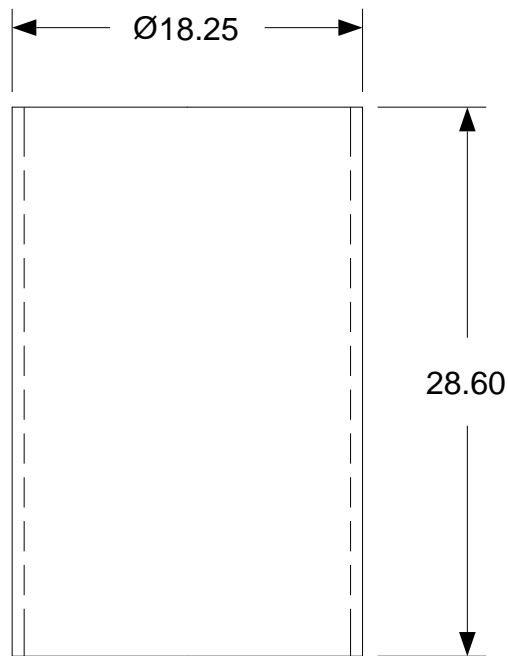


DESCRIPTION - NOTES			
ceramic conical hearth			
SIZE A	DATE 12/11/11	DWG NAME Refractory Ceramic Parts.icd	REV
SCALE	drawn by Larry Dobson		SHEET

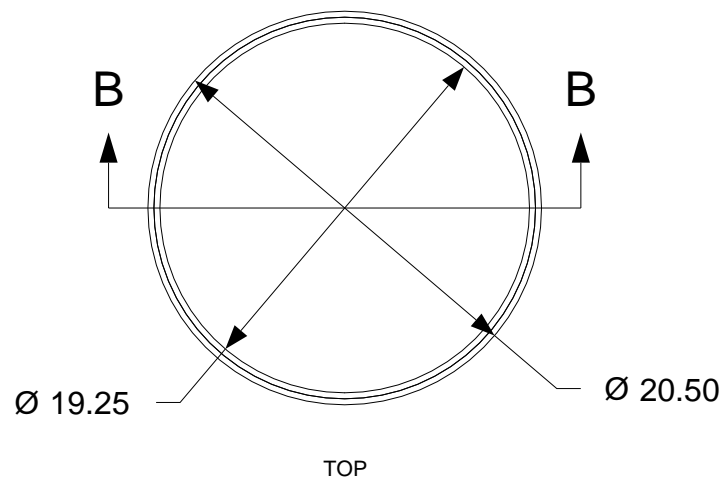


low-water low-cement vibrating
castable ceramic is vibrated evenly
into sheetmetal molds with a small
concrete stinger moved around both
sides of mold.

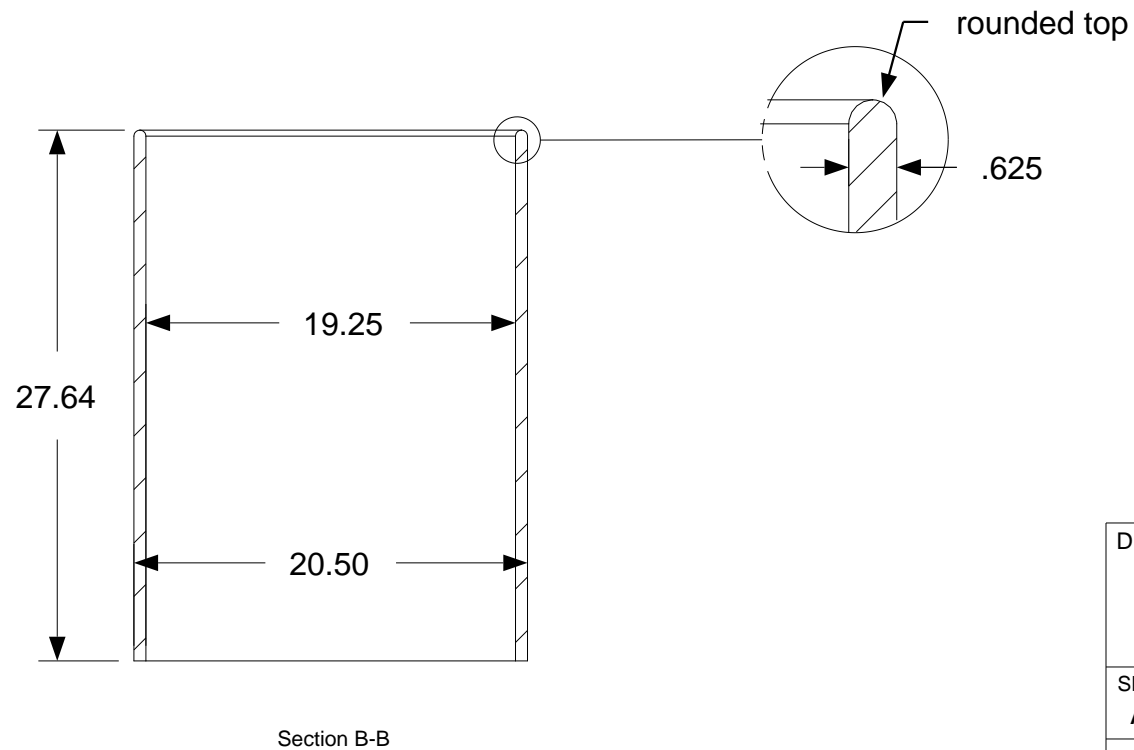
at 150lb/cu.ft. the ceramic hopper/air shell weighs 86lb



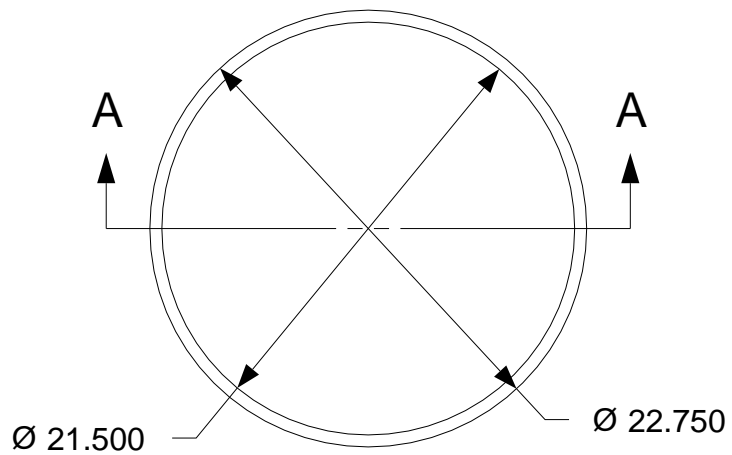
DESCRIPTION - NOTES				
ceramic hopper				
SIZE A	DATE 12/10/11	DWG NAME Refractory Ceramic Parts.icd		REV
SCALE		drawn by Larry Dobson		SHEET



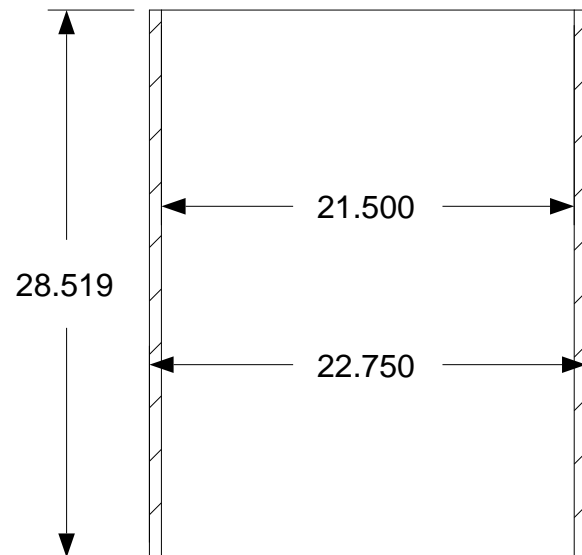
at 150lb/cu.ft. the ceramic air inner shell weighs 93lb



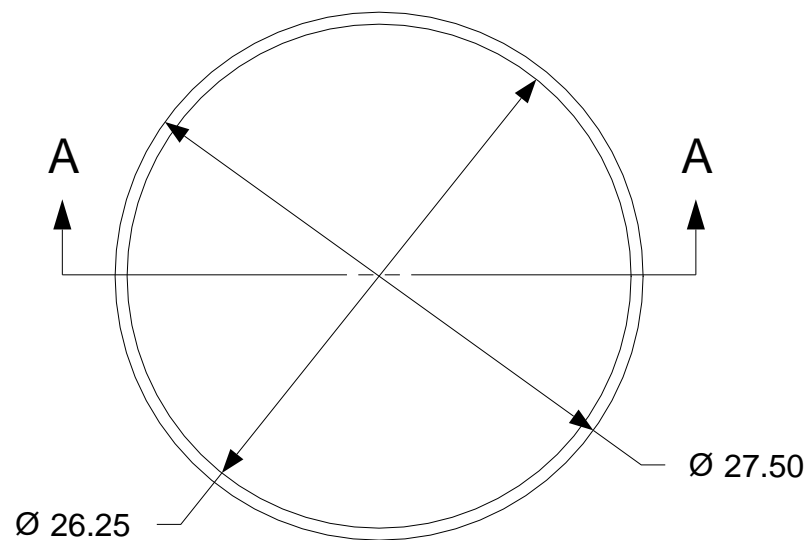
DESCRIPTION - NOTES				
ceramic air inner shell				
SIZE A	DATE 1/1/08	DWG NAME Refractory Ceramic Parts.icd		REV
SCALE		drawn by Larry Dobson		SHEET



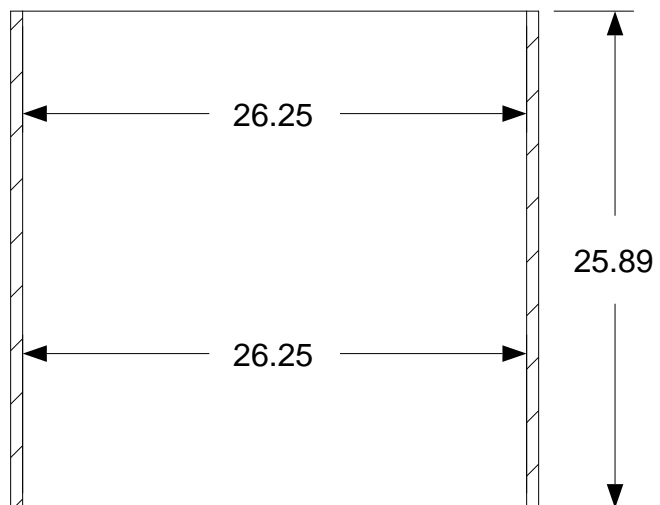
at 150lb/cu.ft. the ceramic combustor inner shell weighs 108lb



DESCRIPTION - NOTES			
ceramic combustor inner shell			
SIZE	DATE	DWG NAME	REV
A	1/1/08	<double-click ~ drawing name>	
SCALE		drawn by Larry Dobson	SHEET



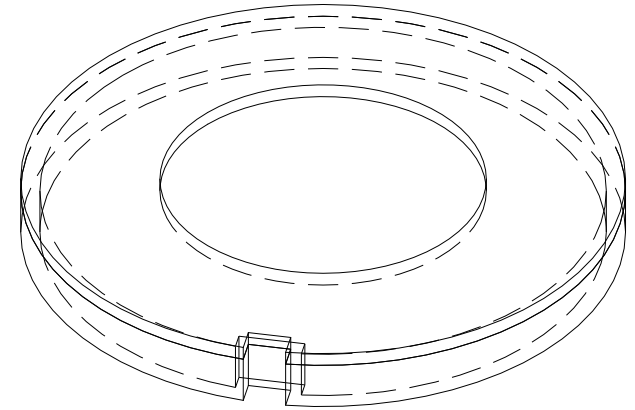
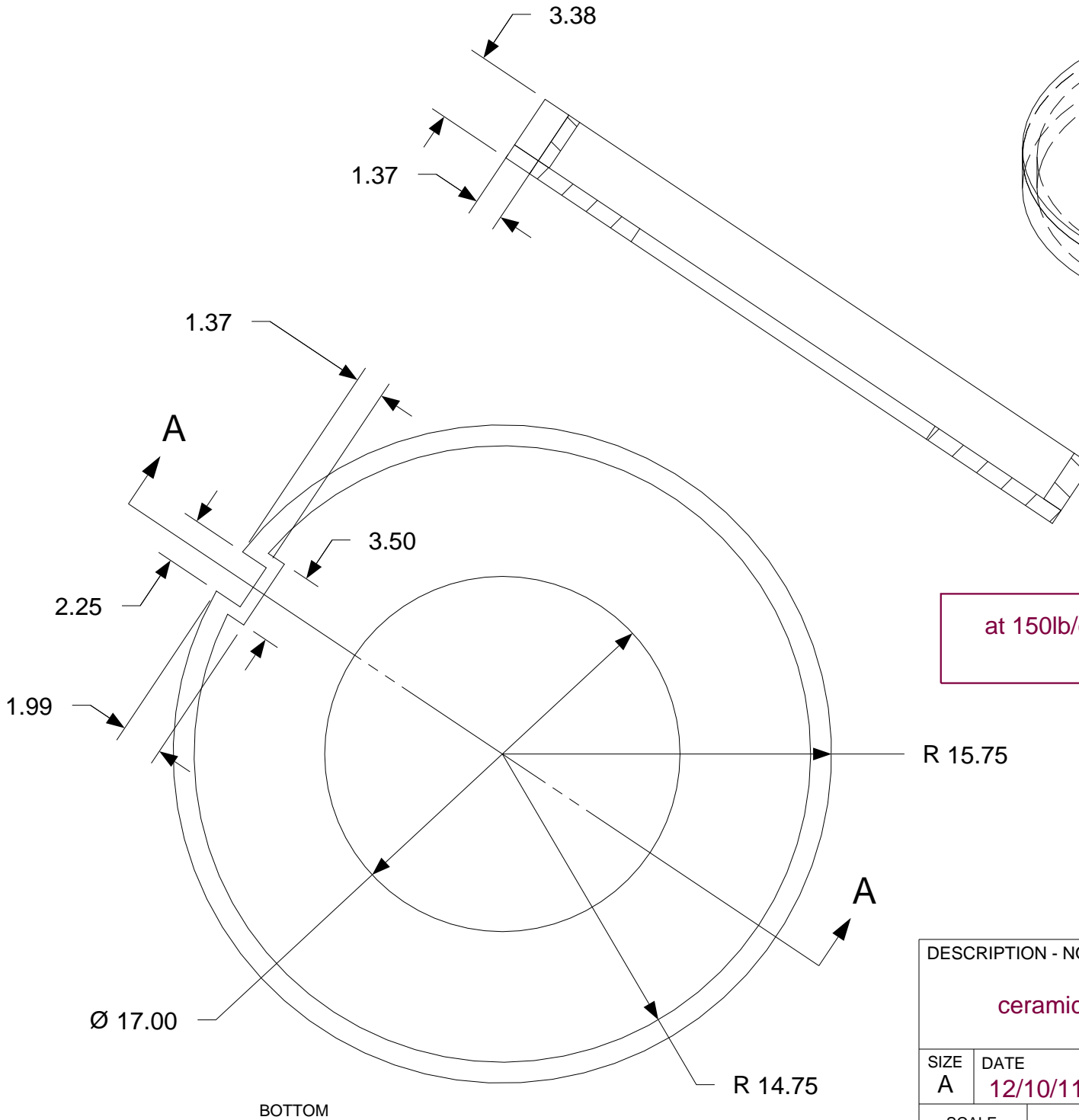
at 150lb/cu.ft. the ceramic combustor outer shell weighs 119lb



DESCRIPTION - NOTES

ceramic combustor outer shell

SIZE	DATE	DWG NAME	REV
A	12/10/11	Refractory Ceramic Parts.icd	
SCALE	drawn by Larry Dobson		SHEET



at 150lb/cu.ft. the ceramic exhaust transition lid weighs 58lb

DESCRIPTION - NOTES			
ceramic exhaust transition lid			
SIZE	DATE	DWG NAME	REV
A	12/10/11	Refractory Ceramic Parts.icd	
SCALE		drawn by Larry Dobson	SHEET