



The BMSY series motor adapts the advanced **ROLORTORC™** gear set design with **DISC** distribution flow and high pressure. These motors can be supplied with various options for multifunctional operations in accordance with the application requirements. The output shaft tapered roller bearings permit high axial and radial forces offering a smooth operation during low pressure start up and high pressure operation.

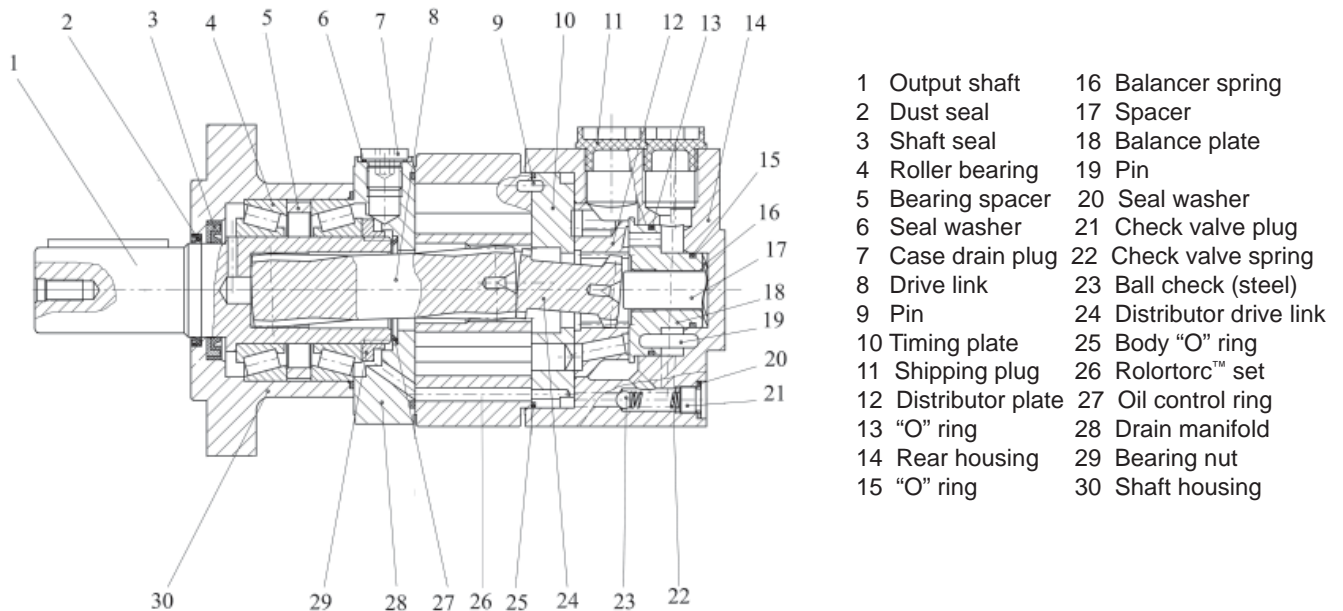
These low weight advanced construction design motors are manufactured in accordance with the requirements of the ISO 9000-2000 quality system.

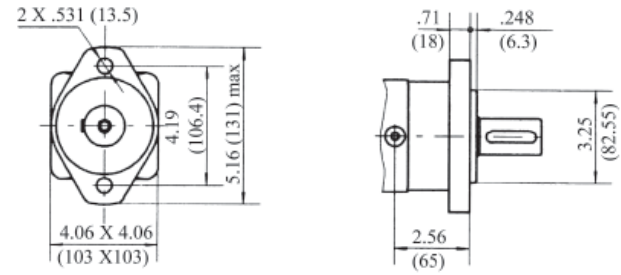
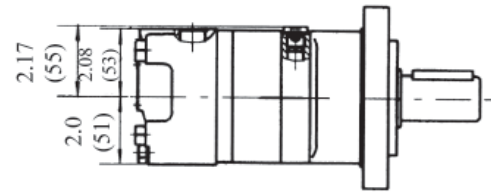
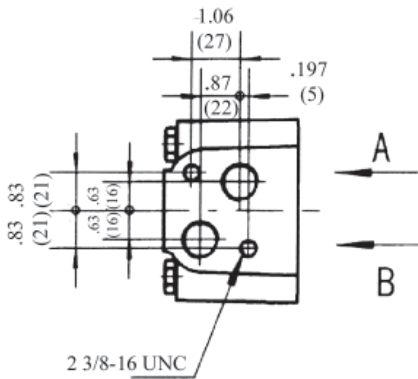
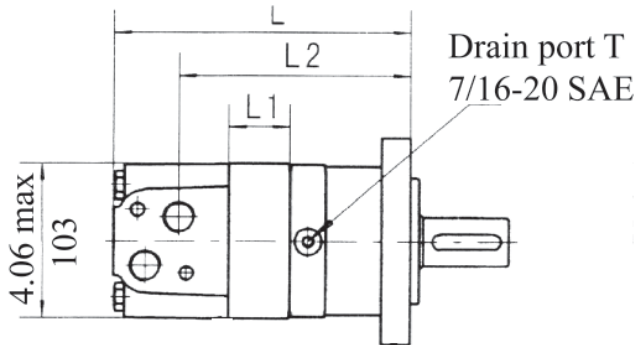
### Technical Specifications - BMSY

MODEL		BMSY80	BMSY100	BMSY125	BMSY160	BMSY200	BMSY250	BMSY315	BMSY400	BMSY475
Displacement	CM <sup>3</sup> /Rev	81	101	125	154	194	243	311	394	475
	(In <sup>3</sup> /Rev)	(4.92)	(6.15)	(7.63)	(9.39)	(11.83)	(14.83)	(18.97)	(24.04)	(28.98)
Maximum Speed	Cont	800	748	600	470	375	300	240	185	155
	Int.	990	900	720	560	450	360	280	225	185
Max Torque	Cont	225 (1991)	290 (2566)	365 (3230)	485 (4292)	586(5185)	708 (6265)	880 (7787)	880 (7786)	910 (8053)
	Int.	250 (2212)	320 (2832)	400 (3540)	540 (4778)	645 (5707)	806 (7142)	960(8495)	960(8495)	960(8495)
Max Differential	Cont	17.5 (2576)	17.5 (2576)	20.2 (2973)	21 (3045)	21 (3045)	20 (2900)	20 (2900)	16 (2320)	14 (2030)
	Int.	21 (3091)	21 (3091)	22.5 (3265)	22.5 (3265)	22.5 (3265)	22.5 (3265)	22.5 (3265)	17.5 (2563)	15 (2175)
Max Flow	Cont	65 (17.1)	75 (34.1)	75 (34.1)	75 (19.81)	75 (19.81)	75 (19.81)	75 (19.81)	75 (19.81)	75 (19.81)
	Int.	80 (36.4)	90 (40.9)	90 (40.9)	90 (23.77)	90 (23.77)	90 (23.77)	90 (23.77)	90 (23.77)	90 (23.77)
Weight Kg / (lbs)		9.8 (21.6)	10 (22)	10.3 (22.7)	10.7 (23.5)	11.1 (24.6)	11.6 (25.5)	12.3 (27.1)	13.2 (29.1)	14.3(31.52)

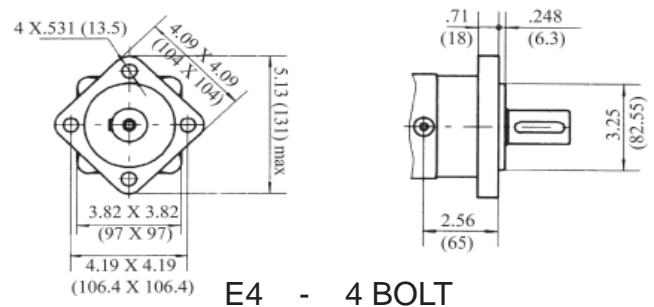
Continuous = maximum of continuous operation

Intermittent = maximum operating range for 6 seconds per minute

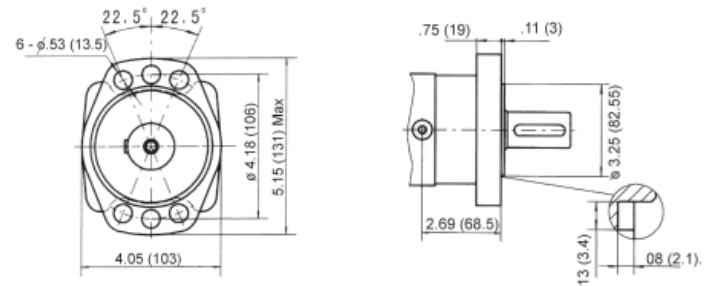




E2 - SAE "A" 2 BOLT



E4 - 4 BOLT



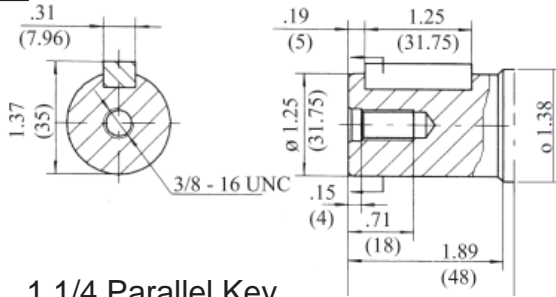
F6 - 6 BOLT MAGNETO

PORT SIZES	SAE	NPT
P (A,B)	7/8-14 SAE	1/2-14 NPTF
T	7/16-20 SAE	7/16-20 SAE

MODEL BMSY	L		L1		L2	
	inches	mm	inches	mm	inches	mm
BMSY-80	6.70	170	0.63	16	4.98	126.5
BMSY-100	6.85	174	0.79	20	5.14	130.5
BMSY-125	7.04	179	0.98	25	5.33	135.5
BMSY 160	7.22	183.5	1.24	31.5	5.49	140
BMSY 200	7.57	192	1.57	40	5.83	148
BMSY 250	7.95	202	1.97	50	6.22	158
BMSY 315	8.43	214	2.44	62	6.69	170
BMSY 400	8.82	224	2.71	69	7.08	180
BMSY 475	9.37	238	3.26	83	7.63	194

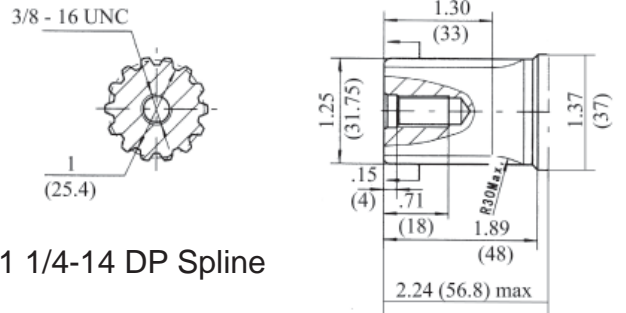
## MODEL BMSY DRIVE SHAFT DATA

**G**



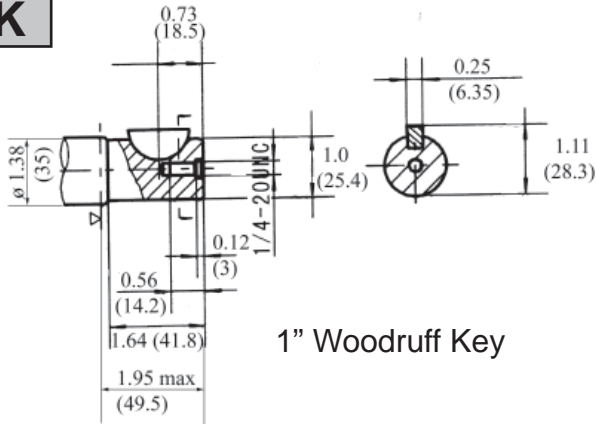
1 1/4 Parallel Key

**F**



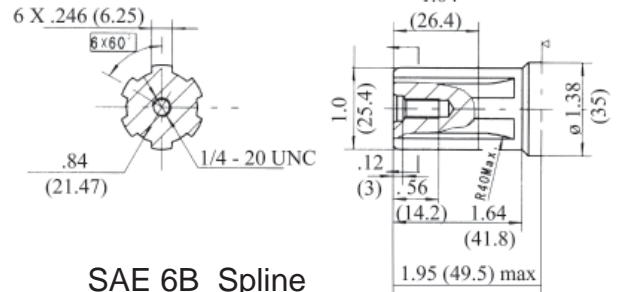
1 1/4-14 DP Spline

**K**



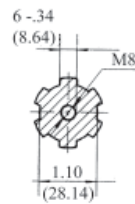
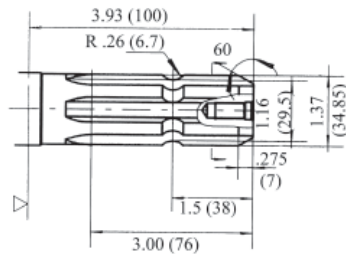
1" Woodruff Key

**S1**



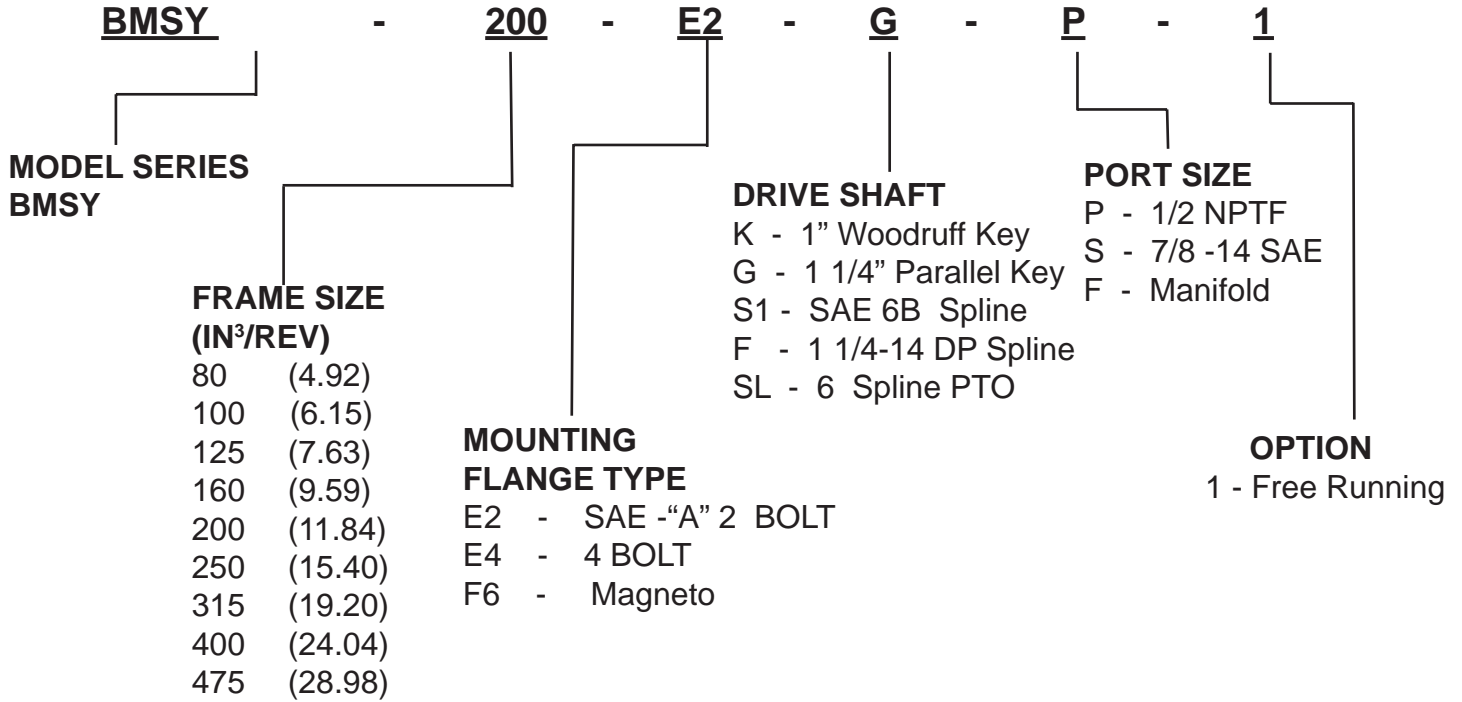
SAE 6B Spline

**SL**



6 Spline PTO Drive Shaft

## BMSY MODEL NUMBER DATA



Additional flange and drive shaft options available please consult factory

<b>BMSY 80</b>		<b>80.6 Cm<sup>3</sup>/Rev 4.92 in<sup>3</sup>/Rev</b>				<b>Max Cont.</b>	<b>Max Int.</b>	
<b>Pressure Mpa (psi)</b>		<b>3.5 (515)</b>	<b>7 (1030)</b>	<b>10.5 (1546)</b>	<b>14 (2060)</b>	<b>17.5 (2576)</b>	<b>21 (3090)</b>	<b>22.5 (3308)</b>
<b>F L O W</b>	<b>LPM (GPM)</b>	<b>Torque Mn (in.Lbs) Speed Specification</b>						
	<b>15 (3.95)</b>	35 (310)	80 (708)	120 (1062)	158 (1398)	195 (1726)	235 (2080)	249 (2204)
		180 rpm	174 rpm	168 rpm	164 rpm	158 rpm	151 rpm	143 rpm
	<b>30 (7.90)</b>	35 (310)	80 (708)	120 (1062)	158 (1398)	195 (1726)	240 (2124)	260 (2301)
		362 rpm	352 rpm	346 rpm	338 rpm	330 rpm	322 rpm	310 rpm
	<b>40 (10.50)</b>	35 (310)	79 (699)	119 (1053)	155 (1372)	193 (1708)	234 (2071)	250 (2213)
		482 rpm	473 rpm	464 rpm	453 rpm	444 rpm	434 rpm	415 rpm
	<b>50 (13.20)</b>	30 (266)	77 (681)	117 (1035)	153 (1354)	192 (1699)	232 (2053)	248 (2195)
	602 rpm	594 rpm	587 rpm	569 rpm	560 rpm	551 rpm	522 rpm	
	<b>60 (15.85)</b>	28 (248)	77 (681)	117 (1035)	153 (1354)	192 (1699)	232 (2053)	247 (2186)
		724 rpm	713 rpm	707 rpm	683 rpm	673 rpm	664 rpm	629 rpm
<b>Max Cont.</b>	<b>75 (19.75)</b>	25 (221)	75 (664)	114 (1009)	152 (1345)	190 (1682)	230 (2036)	245 (2168)
		840 rpm	832 rpm	817 rpm	796 rpm	786 rpm	777 rpm	737 rpm
<b>Max Int.</b>	<b>90 (23.85)</b>	24 (217)	73 (646)	110 (974)	150 (1328)	185 (1637)	225 (1991)	240 (2124)
		900 rpm	893 rpm	872 rpm	853 rpm	843 rpm	834 rpm	792 rpm

<b>BMSY 100</b>		<b>100.8 Cm<sup>3</sup>/Rev 6.15 in<sup>3</sup>/Rev</b>				<b>Max Cont.</b>	<b>Max Int.</b>	
<b>Pressure Mpa (psi)</b>		<b>3.5 (515)</b>	<b>7 (1030)</b>	<b>10.5 (1546)</b>	<b>14 (2060)</b>	<b>17.5 (2576)</b>	<b>21 (3090)</b>	<b>22.5 (3308)</b>
<b>F L O W</b>	<b>LPM (GPM)</b>	<b>Torque Mn (in.Lbs) Speed Specification</b>						
	<b>15 (3.95)</b>	48 (425)	95 (841)	150 (1328)	200 (1770)	250 (2213)	289 (2558)	310 (2744)
		146 rpm	144 rpm	139 rpm	135 rpm	130 rpm	120 rpm	105 rpm
	<b>30 (7.90)</b>	45 (398)	94 (832)	146 (1292)	198 (1752)	250 (2213)	295 (2611)	317 (2805)
		291 rpm	289 rpm	278 rpm	274 rpm	269 rpm	258 rpm	242 rpm
	<b>40 (10.50)</b>	43 (381)	89 (788)	142 (1492)	196 (1735)	248 (2195)	293 (2593)	316 (2797)
		387 rpm	384 rpm	374 rpm	359 rpm	350 rpm	335 rpm	320 rpm
	<b>50 (13.20)</b>	40 (354)	88 (779)	135 (1195)	194 (1717)	247 (2186)	292 (2584)	315 (2788)
	486 rpm	483 rpm	473 rpm	462 rpm	450 rpm	430 rpm	420 rpm	
	<b>60 (15.85)</b>	37 (327)	88 (779)	132 (1168)	185 (1657)	244 (2159)	289 (2558)	312 (2761)
		588 rpm	584 rpm	574 rpm	562 rpm	550 rpm	538 rpm	520 rpm
<b>Max Cont.</b>	<b>75 (19.75)</b>	35 (310)	80 (708)	130 (1151)	180 (1593)	240 (2124)	286 (2531)	310 (2744)
		740 rpm	735 rpm	720 rpm	705 rpm	696 rpm	676 rpm	653 rpm
<b>Max Int.</b>	<b>90 (23.85)</b>	30 (266)	75 (664)	124 (1097)	170 (1505)	236 (2089)	277 (24510)	303 (2682)
		850 rpm	840 rpm	810 rpm	787 rpm	770 rpm	750 rpm	747 rpm

<b>BMSY 125</b>		<b>125 Cm<sup>3</sup>/Rev 7.63 in<sup>3</sup>/Rev</b>				<b>Max Cont.</b>	<b>Max Int.</b>	
<b>Pressure Mpa (psi)</b>		<b>3.5 (515)</b>	<b>7 (1030)</b>	<b>10.5 (1546)</b>	<b>14 (2060)</b>	<b>17.5 (2576)</b>	<b>21 (3090)</b>	<b>22.5 (3308)</b>
<b>F L O W</b>	<b>LPM (GPM)</b>	<b>Torque Mn (in.Lbs) Speed Specification</b>						
	<b>15 (3.95)</b>	55 (487)	120 (1062)	176 (1558)	245 (2168)	309 (2735)	349 (3089)	375 (3319)
		112 rpm	110 rpm	103 rpm	96 rpm	93 rpm	90 rpm	84 rpm
	<b>30 (7.90)</b>	55 (487)	120 (1062)	175 (1549)	250 (2213)	324 (2867)	375 (3319)	408 (3611)
		222 rpm	220 rpm	217 rpm	208 rpm	200 rpm	199 rpm	190 rpm
	<b>40 (10.50)</b>	55 (487)	120 (1062)	175 (1549)	250 (2213)	324 (2867)	370 (3275)	408 (3611)
		302 rpm	298 rpm	292 rpm	284 rpm	276 rpm	268 rpm	260 rpm
	<b>50 (13.20)</b>	50 (443)	115 (443)	176 (1558)	248 (2195)	320 (3832)	370 (3275)	406 (3593)
	379 rpm	373 rpm	368 rpm	363 rpm	350 rpm	339 rpm	328 rpm	
	<b>60 (15.85)</b>	45 (398)	113 (1000)	171 (1513)	245 (2168)	324 (2867)	368 (3257)	406 (3593)
		456 rpm	448 rpm	443 rpm	439 rpm	425 rpm	406 rpm	393 rpm
<b>Max Cont.</b>	<b>75 (19.75)</b>	45 (398)	110 (974)	167 (1478)	240 (2724)	314 (2779)	370 (3275)	401 (3549)
		570 rpm	563 rpm	555 rpm	546 rpm	533 rpm	515 rpm	503 rpm
<b>Max Int.</b>	<b>90 (23.85)</b>	40 (354)	105 (938)	162 (1434)	237 (2097)	309 (2735)	365 (3230)	398 (3522)
		685 rpm	676 rpm	670 rpm	659 rpm	644 rpm	625 rpm	610 rpm

<b>BMSY 160</b>		<b>154 Cm<sup>3</sup>/Rev 9.39 in<sup>3</sup>/Rev</b>				<b>Max Cont.</b>	<b>Max Int.</b>	
<b>Pressure Mpa (psi)</b>		<b>3.5 (515)</b>	<b>7 (1030)</b>	<b>10.5 (1546)</b>	<b>14 (2060)</b>	<b>17.5 (2576)</b>	<b>21 (3090)</b>	<b>22.5 (3308)</b>
<b>F L O W</b>	<b>LPM (GPM)</b>	<b>Torque Mn (in.Lbs) Speed Specification</b>						
	<b>15 (3.95)</b>	70 (620)	142 (1257)	215 (1904)	298 (2639)	372 (3295)	435 (3852)	476 (4216)
		93 rpm	91 rpm	89 rpm	85 rpm	80 rpm	76 rpm	58 rpm
	<b>30 (7.90)</b>	73 (646)	151 (1337)	225 (1992)	312 (2763)	382 (3383)	456 (4038)	492 (4357)
		189 rpm	187 rpm	181 rpm	176 rpm	170 rpm	162 rpm	153 rpm
	<b>40 (10.50)</b>	75 (664)	152 (1346)	228 (2019)	314 (2781)	383 (3392)	454 (4021)	488 (4322)
		252 rpm	250 rpm	246 rpm	239 rpm	234 rpm	228 rpm	212 rpm
	<b>50 (13.20)</b>	70 (620)	148 (1310)	225 (1992)	305 (2701)	372 (3294)	445 (3941)	480 (4251)
		313 rpm	310 rpm	306 rpm	298 rpm	293 rpm	285 rpm	272 rpm
	<b>60 (15.85)</b>	68 (575)	143 (1266)	218 (1930)	296 (2621)	370 (3277)	442 (3914)	480 (4251)
	378 rpm	376 rpm	370 rpm	362 rpm	353 rpm	346 rpm	332 rpm	
<b>Max Cont.</b>	<b>75 (19.75)</b>	62 (549)	140 (1239)	211 (1868)	291 (2577)	365 (3232)	439 (3888)	475 (4207)
		475 rpm	469 rpm	461 rpm	450 rpm	441 rpm	432 rpm	414 rpm
<b>Max Int.</b>	<b>90 (23.85)</b>	59 (522)	131 (1160)	202 (1789)	286 (2533)	337 (2984)	425 (3764)	460 (4074)
		567 rpm	561 rpm	554 rpm	543 rpm	532 rpm	520 rpm	509 rpm

<b>BMSY 200</b>		<b>194 Cm<sup>3</sup>/Rev 11.8 in<sup>3</sup>/Rev</b>				<b>Max Cont.</b>	<b>Max Int.</b>	
<b>Pressure Mpa (psi)</b>		<b>3.5 (515)</b>	<b>7 (1030)</b>	<b>10.5 (1546)</b>	<b>14 (2060)</b>	<b>17.5 (2576)</b>	<b>21 (3090)</b>	<b>22.5 (3308)</b>
<b>F L O W</b>	<b>LPM (GPM)</b>	<b>Torque Mn (in.Lbs) Speed Specification</b>						
	<b>15 (3.95)</b>	87 (771)	179 (1585)	273 (2737)	371 (3286)	471 (4171)	562 (4977)	610 (5403)
		74 rpm	73 rpm	71 rpm	68 rpm	64 rpm	60 rpm	48 rpm
	<b>30 (7.90)</b>	91 (806)	190 (1682)	288 (2550)	386 (3418)	489 (4331)	572 (5066)	618 (5473)
		150 rpm	148 rpm	143 rpm	140 rpm	134 rpm	128 rpm	119 rpm
	<b>40 (10.50)</b>	94 (832)	193 (1709)	296 (2621)	394 (3489)	498 (4410)	584 (5172)	645 (5712)
		198 rpm	195 rpm	192 rpm	188 rpm	183 rpm	178 rpm	167 rpm
	<b>50 (13.20)</b>	90 (797)	191 (1691)	292 (2586)	389 (3445)	493 (4366)	580 (5137)	634 (5615)
		248 rpm	246 rpm	241 rpm	236 rpm	230 rpm	223 rpm	212 rpm
	<b>60 (15.85)</b>	85 (752)	185 (1638)	279 (2471)	382 (3383)	483 (4277)	575 (5092)	622 (5509)
	300 rpm	295 rpm	288 rpm	281 rpm	273 rpm	263rpm	251 rpm	
<b>Max Cont.</b>	<b>75 (19.75)</b>	78 (690)	176 (1558)	271 (2400)	370 (3277)	472 (4180)	561 (4968)	610 (5402)
		374 rpm	370 rpm	364 rpm	360 rpm	352 rpm	340 rpm	331 rpm
<b>Max Int.</b>	<b>90 (23.85)</b>	68 (602)	163 (1443)	265 (2347)	361 (3197)	456 (4038)	545 (4827)	599 (5305)
		443 rpm	440 rpm	435 rpm	428 rpm	424 rpm	413 rpm	400 rpm

<b>BMSY 250</b>		<b>243 Cm<sup>3</sup>/Rev 14.8 in<sup>3</sup>/Rev</b>				<b>Max Cont.</b>	<b>Max Int.</b>	
<b>Pressure Mpa (psi)</b>		<b>3.5 (515)</b>	<b>7 (1030)</b>	<b>10.5 (1546)</b>	<b>14 (2060)</b>	<b>17.5 (2576)</b>	<b>20 (2950)</b>	<b>22.5 (3308)</b>
<b>F L O W</b>	<b>LPM (GPM)</b>	<b>Torque Mn (in.Lbs) Speed Specification</b>						
	<b>15 (3.95)</b>	110 (974)	231 (2045)	351 (3108)	462 (4091)	585 (5181)	681 (6031)	778 (6890)
		59 rpm	58 rpm	56 rpm	53 rpm	50 rpm	46 rpm	35 rpm
	<b>30 (7.90)</b>	116 (1027)	236 (2090)	359 (3179)	475 (4207)	597 (5287)	700 (6199)	790 (6997)
		119 rpm	117 rpm	114 rpm	108 rpm	102 rpm	92 rpm	80 rpm
	<b>40 (10.50)</b>	118 (1045)	241 (2134)	363 (3215)	480 (4251)	599 (5305)	706 (6253)	796 (7050)
		162 rpm	159 rpm	156 rpm	150 rpm	143 rpm	134 rpm	121 rpm
	<b>50 (13.20)</b>	111 (983)	234 (2072)	352 (3117)	472 (4180)	591 (5234)	693 (6137)	788 (6979)
		203 rpm	201 rpm	197 rpm	191 rpm	182 rpm	173 rpm	158 rpm
	<b>60 (15.85)</b>	106 (929)	224 (1947)	345 (3055)	462 (4091)	582 (5154)	685 (6067)	772 (6837)
	244 rpm	242 rpm	237 rpm	230 rpm	220 rpm	208 rpm	194 rpm	
<b>Max Cont.</b>	<b>75 (19.75)</b>	101 (841)	214 (1895)	340 (3011)	454 (4021)	570 (5048)	670 (5934)	760 (6731)
		303 rpm	299 rpm	294 rpm	285 rpm	272 rpm	260 rpm	244 rpm
<b>Max Int.</b>	<b>90 (23.85)</b>	93 (797)	209 (1851)	335 (2967)	447 (3959)	559 (4951)	657 (5819)	749 (6633)
		363 rpm	359 rpm	354 rpm	348 rpm	340 rpm	328 rpm	303 rpm

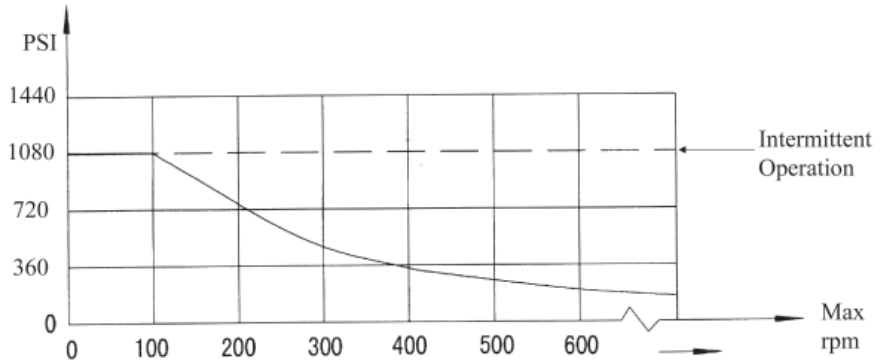
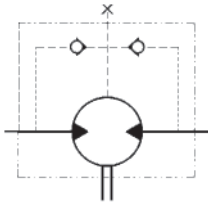
<b>BMSY 315</b>		<b>311 Cm<sup>3</sup>/Rev 18.9 in<sup>3</sup>/Rev</b>				<b>Max Cont.</b>	<b>Max Int.</b>
<b>Pressure Mpa (psi)</b>		<b>3.5 (515)</b>	<b>7 (1030)</b>	<b>10.5 (1546)</b>	<b>14 (2060)</b>	<b>17.5 (2576)</b>	<b>20 (2950)</b> <b>22.5 (3308)</b>
<b>F L O W</b>	<b>LPM (GPM)</b>	<b>Torque Mn (in.Lbs) Speed Specification</b>					
	<b>15 (3.95)</b>	148 (1310)	304 (2692)	456 (4038)	613 (5429)	762 (6749)	879 (7785) 978 (8662)
		48 rpm	47 rpm	45 rpm	43 rpm	41 rpm	39 rpm 27 rpm
	<b>30 (7.90)</b>	155 (1372)	314 (2781)	465 (4118)	635 (5624)	778 (6890)	884 (7829) 988 (8750)
		95 rpm	93 rpm	91 rpm	89 rpm	86 rpm	82 rpm 67 rpm
	<b>40 (10.50)</b>	160 (1417)	321 (2843)	479 (4242)	650 (5757)	796 (7050)	906 (8024) 997 (8830)
		127 rpm	125 rpm	121 rpm	117 rpm	115 rpm	109 rpm 91 rpm
	<b>50 (13.20)</b>	155 (1372)	314 (2781)	465 (4118)	638 (5650)	780 (6908)	886 (7847) 988 (8750)
		159 rpm	157 rpm	153 rpm	149 rpm	145 rpm	142 rpm 128 rpm
<b>Max Cont.</b>	<b>60 (15.85)</b>	151 (1337)	306 (2710)	453 (4012)	620 (5491)	756 (6695)	886 (7847) 976 (8644)
		187 rpm	185 rpm	181 rpm	176 rpm	169 rpm	157 rpm 143 rpm
<b>Max Int.</b>	<b>75 (19.75)</b>	146 (1293)	300 (2657)	445 (3941)	613 (5429)	755 (6681)	755 (7743) 966 (8549)
		238 rpm	236 rpm	232 rpm	227 rpm	224 rpm	220 rpm 196 rpm
<b>Max Int.</b>	<b>90 (23.85)</b>	135 (1194)	284 (2513)	436 (3858)	601 (5318)	740 (6549)	863 (7637) 952 (8425)
		286 rpm	283 rpm	278 rpm	272 rpm	265 rpm	257 rpm 232 rpm

<b>BMSY 400</b>		<b>394 Cm<sup>3</sup>/Rev 24.04 in<sup>3</sup>/Rev</b>				<b>Max Cont.</b>	<b>Max Int.</b>
<b>Pressure Mpa (psi)</b>		<b>3.5 (515)</b>	<b>7 (1030)</b>	<b>10.5 (1546)</b>	<b>14 (2060)</b>	<b>16 (2354)</b>	<b>17.5 (2576)</b>
<b>F L O W</b>	<b>LPM (GPM)</b>	<b>Torque Mn (in.Lbs) Speed Specification</b>					
	<b>15 (3.95)</b>	186 (1646)	379 (3354)	578 (5115)	779 (6894)	896 (5204)	986 (8726)
		37 rpm	36 rpm	35 rpm	33 rpm	31 rpm	29 rpm
	<b>30 (7.90)</b>	190 (1681)	388 (3433)	590 (5221)	791 (7000)	905 (8009)	991 (8770)
		75 rpm	73 rpm	71 rpm	68 rpm	65 rpm	61 rpm
	<b>40 (10.50)</b>	195 (1725)	394 (3486)	569 (5035)	797 (7053)	912 (8071)	998 (8832)
		99 rpm	97 rpm	95 rpm	93 rpm	90 rpm	85 rpm
	<b>50 (13.20)</b>	191 (1690)	388 (3433)	587 (5194)	785 (6947)	904 (8000)	983 (8699)
		125 rpm	123 rpm	118 rpm	114 rpm	109 rpm	102 rpm
<b>Max Cont.</b>	<b>60 (15.85)</b>	186 (1646)	388 (3433)	587 (5194)	785 (6947)	904 (8000)	983 (8699)
		149 rpm	146 rpm	142 rpm	137 rpm	131 rpm	122 rpm
<b>Max Cont.</b>	<b>75 (19.75)</b>	181 (1601)	372 (3292)	576 (5097)	770 (6814)	891 (7885)	973 (8611)
		187 rpm	183 rpm	177 rpm	171 rpm	164 rpm	153 rpm
<b>Max Int.</b>	<b>90 (23.85)</b>	176 (1557)	367 (3247)	571 (5053)	766 (6779)	883 (7814)	965 (8540)
		226 rpm	221 rpm	214 rpm	208 rpm	199 rpm	183 rpm

<b>BMSY 475</b>		<b>475 Cm<sup>3</sup>/Rev 28.9 in<sup>3</sup>/Rev</b>			<b>Max Cont.</b>	<b>Max Int.</b>
<b>Pressure Mpa (psi)</b>		<b>3.5 (515)</b>	<b>7 (1030)</b>	<b>10.5 (1546)</b>	<b>14 (2060)</b>	<b>15 (2207)</b>
<b>F L O W</b>	<b>LPM (GPM)</b>	<b>Torque Mn (in.Lbs) Speed Specification</b>				
	<b>15 (3.95)</b>	218 (1929)	439 (3885)	661 (5849)	892 (7894)	995 (8805)
		30	29	28	27	25
	<b>30 (7.90)</b>	223 (1973)	450 (3982)	676 (5982)	910 (8053)	1002 (8867)
		61	60	58	56	53
	<b>40 (10.50)</b>	228 (2017)	461 (4079)	689 (6097)	927 (8203)	1017 (9000)
		82	80	77	74	68
	<b>50 (13.20)</b>	224 (1982)	456 (4035)	682 (6035)	920 (8142)	1008 (8920)
		103	101	97	92	86
<b>Max Cont.</b>	<b>60 (15.85)</b>	220 (1947)	451 (3991)	677 (5991)	913 (8080)	998 (8832)
		123	121	118	112	105
<b>Max Cont.</b>	<b>75 (19.75)</b>	212 (1876)	443 (3920)	664 (5876)	901 (7973)	980 (8673)
		155	153	147	140	132
<b>Max Int.</b>	<b>90 (23.85)</b>	196 (1734)	421 (3725)	643 (5690)	877 (7761)	959 (8487)
		186	184	178	170	157

## MODEL BMSY TECHNICAL DATA

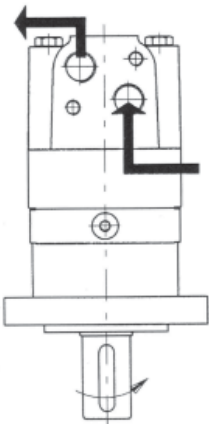
### SHAFT SEAL RATED PRESSURE



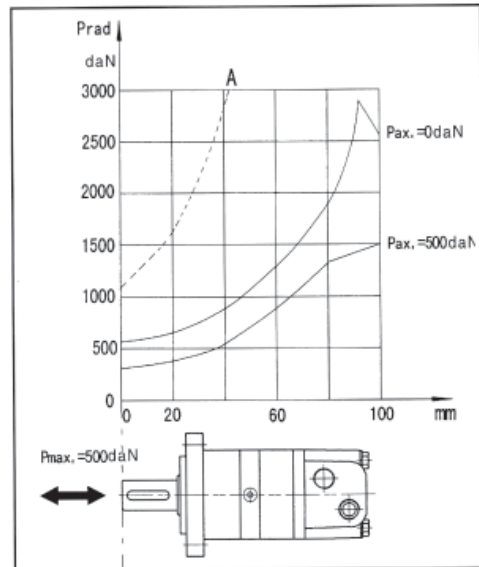
### CASE DRAIN

In applications without a motor drain line, the pressure exerted on the shaft seal is marginally in excess of the return line pressure. When the drain line is used the pressure exerted on the shaft seal is equal to the return line pressure.

### SHAFT ROTATION DIRECTION



Axial and Radial forces



The output shaft runs tapered bearings that permit high axial and radial forces, Curve "A" shows max radial shaft load, Any shaft loads exceeding the values quoted in the curve will involve risk of breakage. The two other curves apply to a B10 bearing life of 3000 hours at 200 RPM.