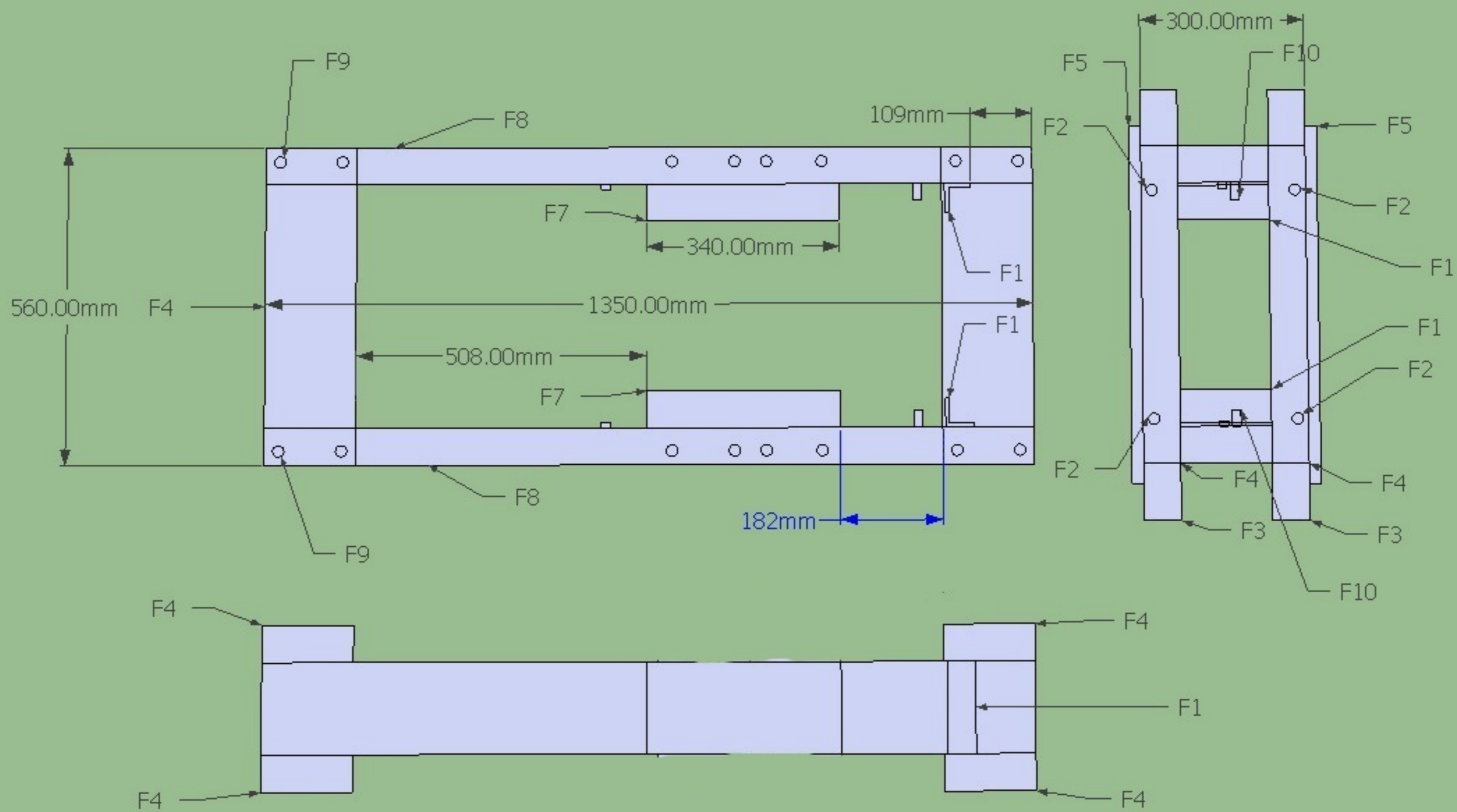
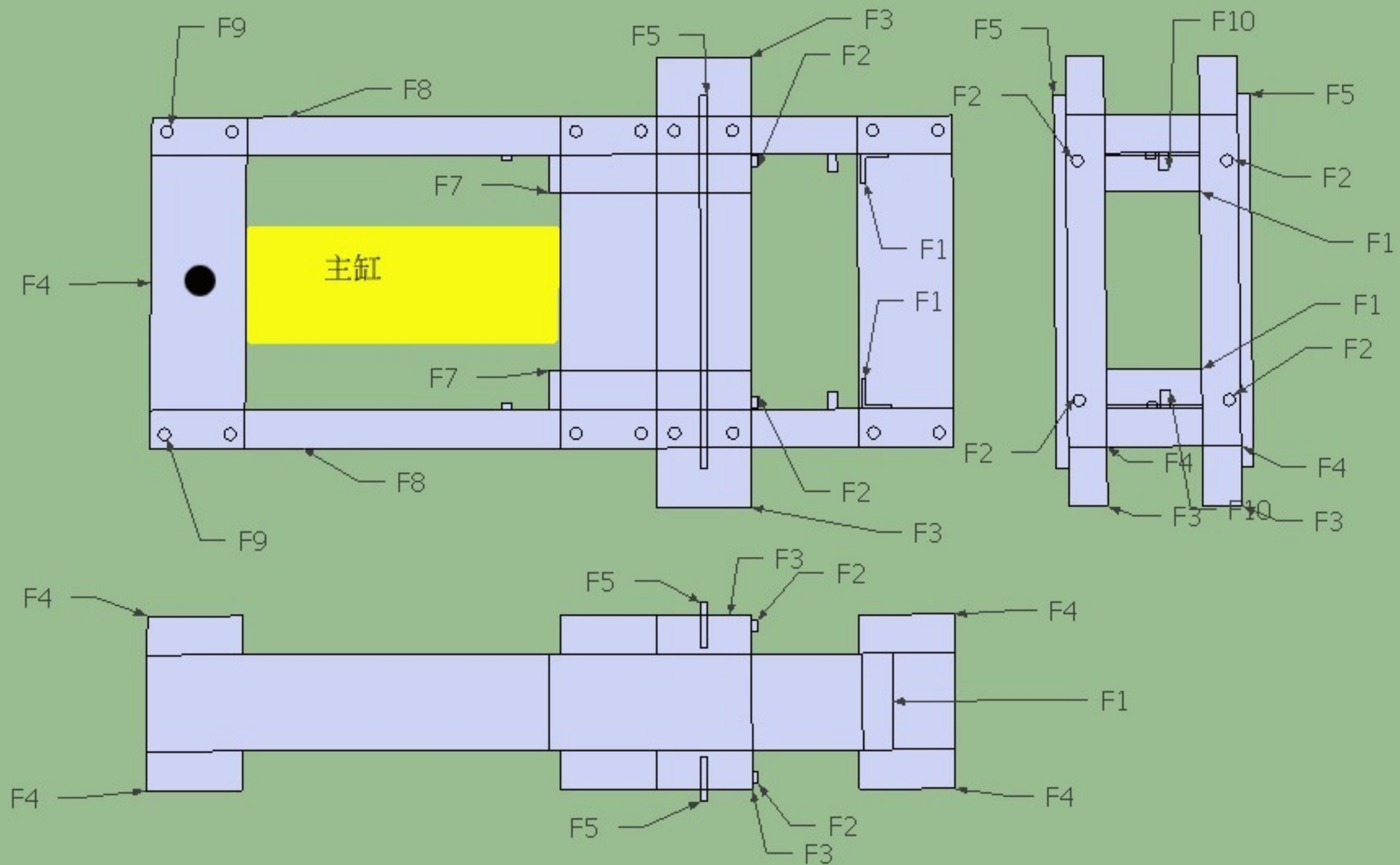
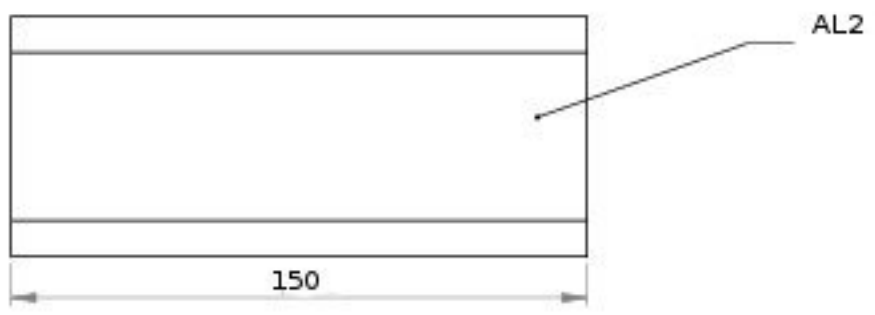
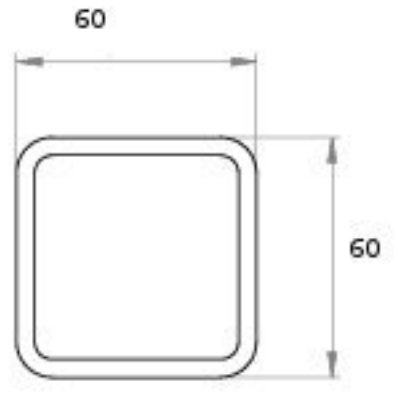
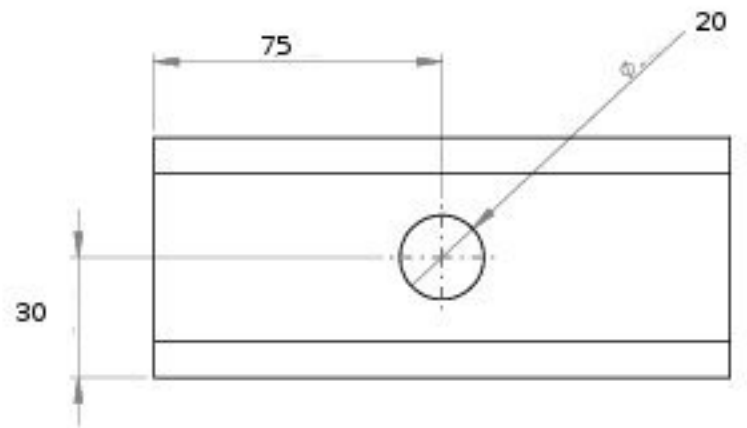
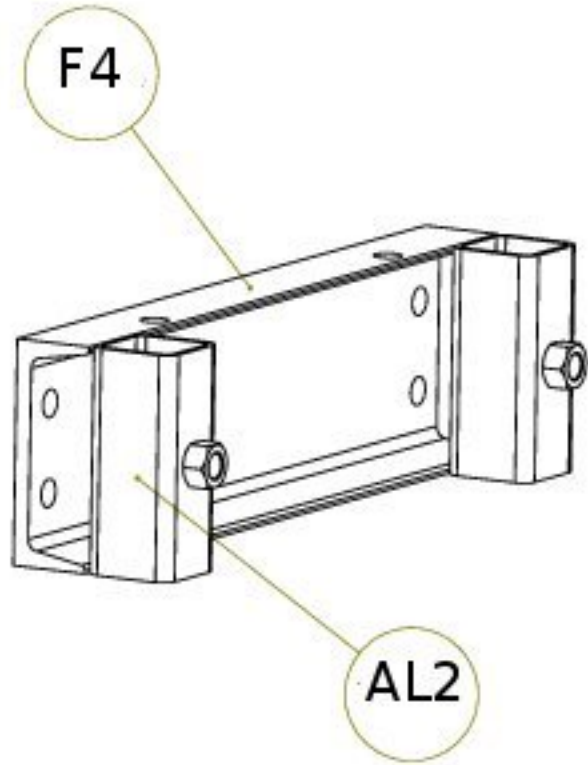
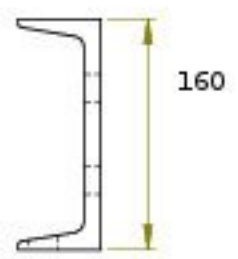
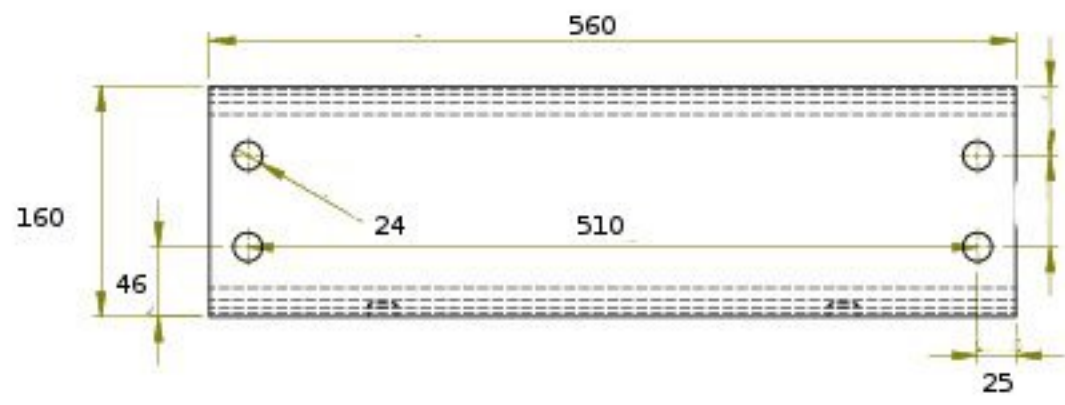
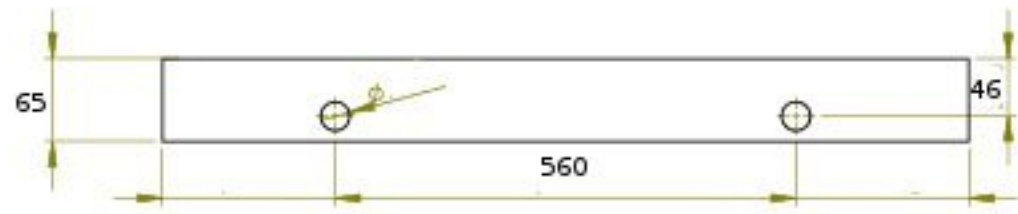


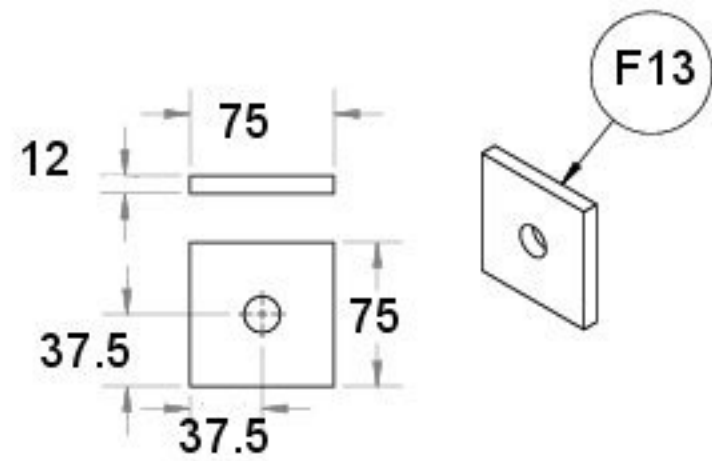
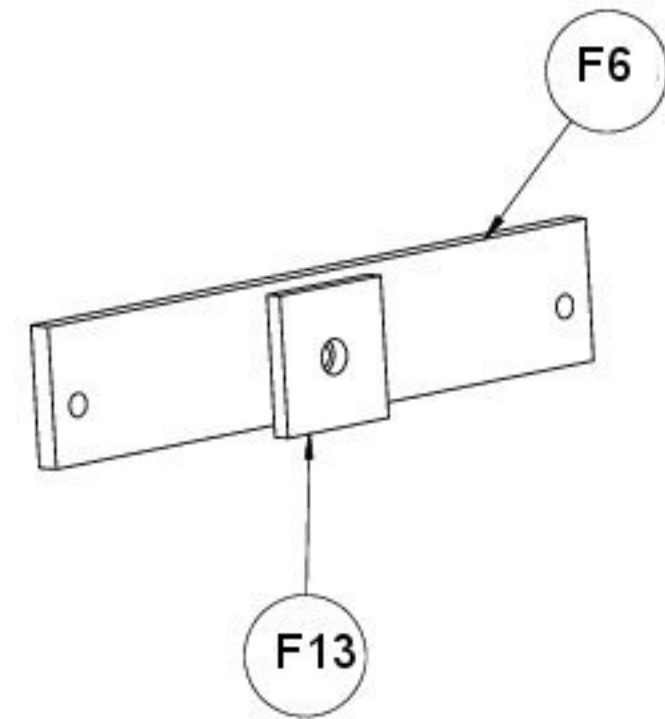
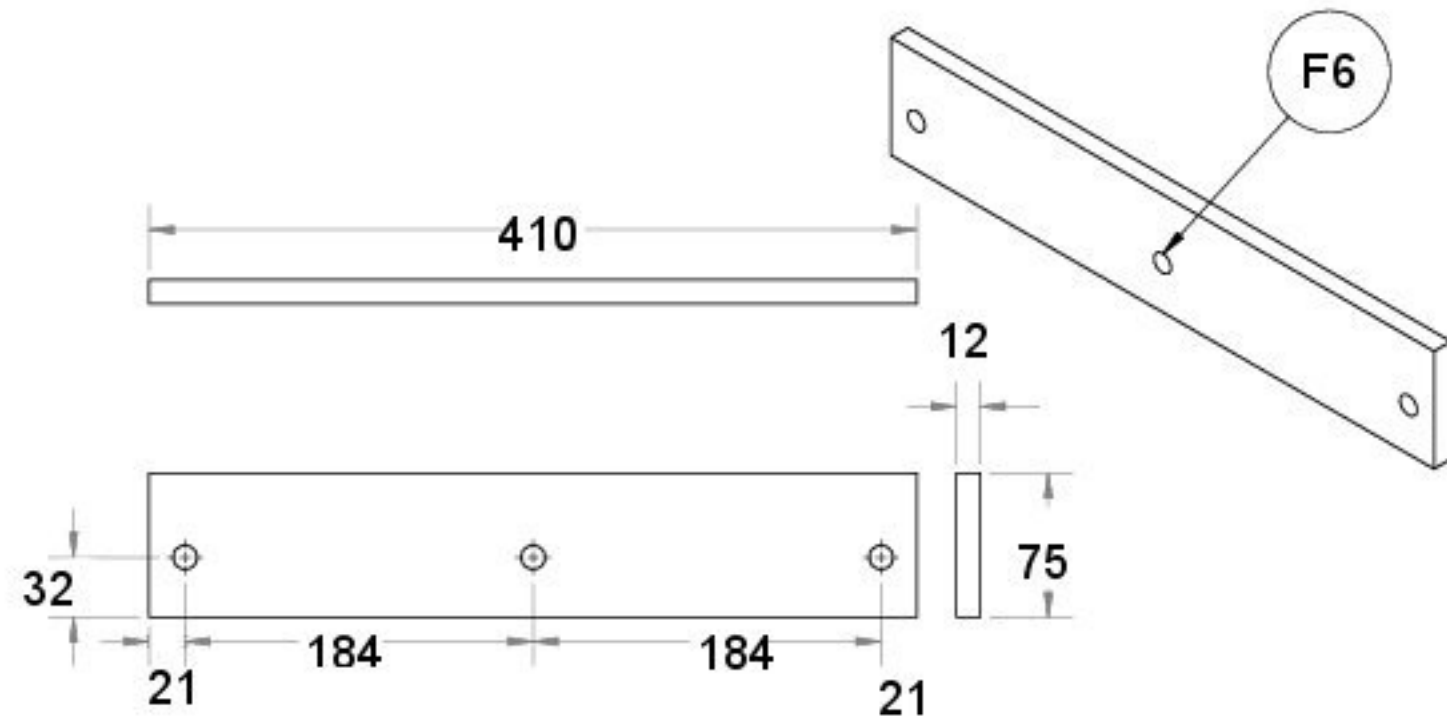
F1	角钢	50*50*6	160	2	污垢阻滞剂
F2	螺杆	M20, 8.8	95	4	调节螺栓
F3	U型槽钢	160	760	2	抽屉梁
F4	U型槽钢	160	560	6	横梁
F5	扁钢	75*10	610	2	横梁加强
F6	扁钢	75*12	410	2	滚柱导轨
F7	U型槽钢	160	340	2	间隔
F8	U型槽钢	160	1350	2	垂直波束
F9	螺栓和螺母	M24, 10.9	80	32	10.9 或更高
F10	螺栓	M12, 8.8	75	2	8.8
F11	螺栓	M12, 8.8	55	4	8.8
F12	V型槽轴承	R=45, $\phi=12$	20	4	
F13	螺母	M16	80	10	螺母
F14	镀锌螺母	M16	80	4	镀锌螺母
F15	扁钢	75*12	75	2	抽屉间隔
参考号码	类型	大小	长度	数量	名称
		框架			





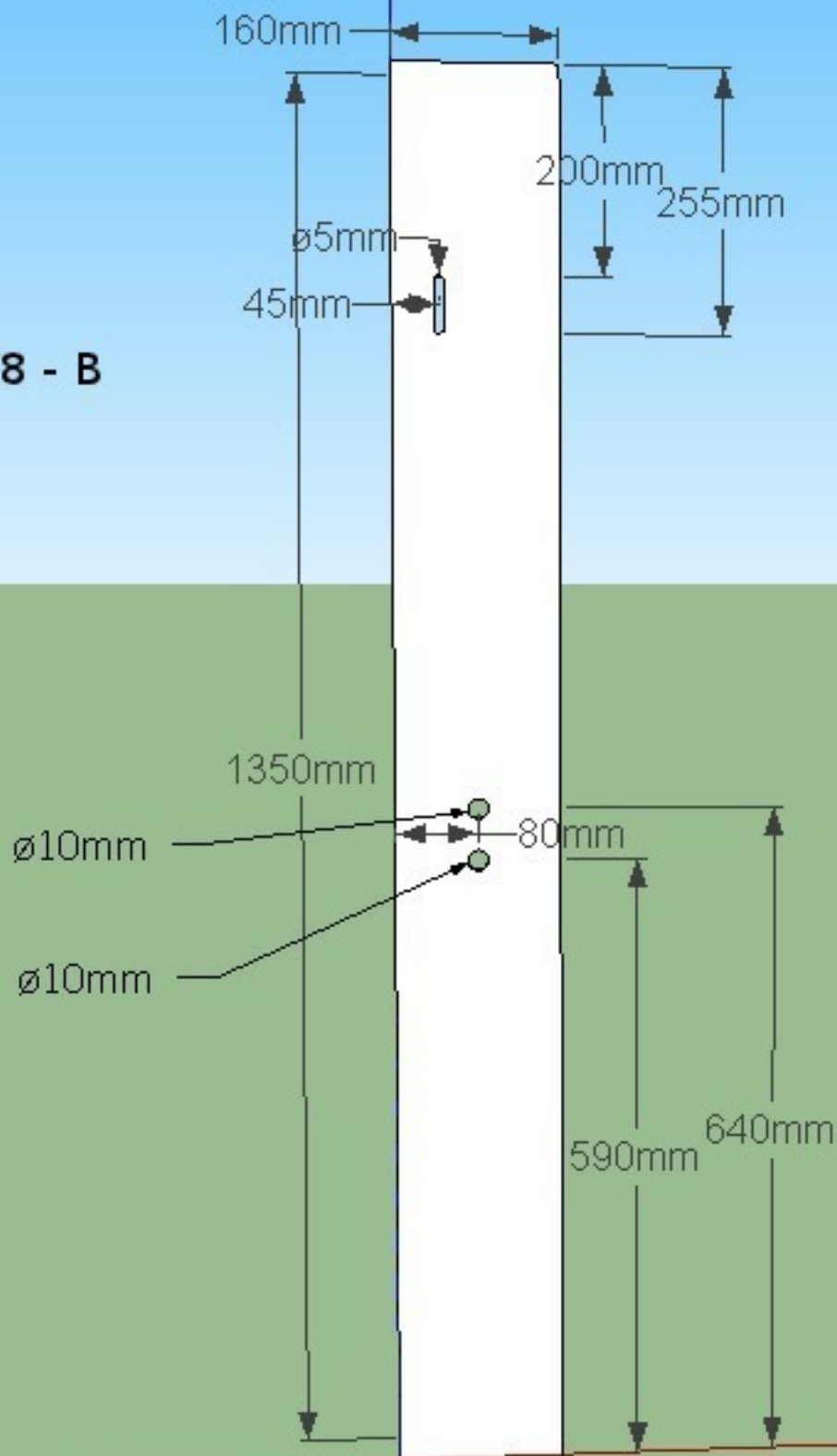


UNLESS OTHERWISE SPECIFIED: DIMENSIONS ARE IN MILLIMETERS SURFACE FINISH TOLERANCES: LINEAR: ANGULAR:			FINISH:	DEBUR AND BREAK SHARP EDGES	DO NOT SCALE DRAWING	REVISION
NAME	SIGNATURE	DATE			TITLE 横梁	
DRAWN					DRAWING NO.	
CHKD					SCALE 1:5	
APP'VD					SHEET 1 OF 1	
MFG				MATERIAL:	A3	
QA				WEIGHT:		

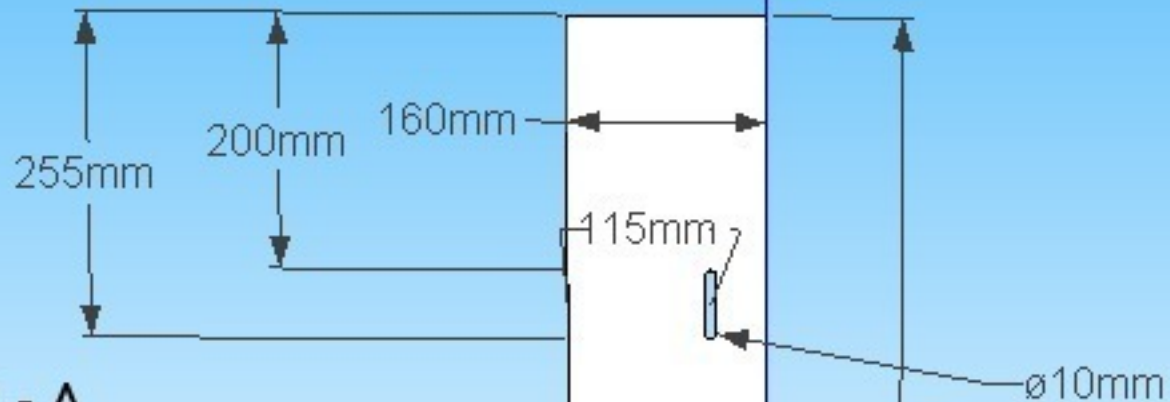


UNLESS OTHERWISE SPECIFIED: DIMENSIONS ARE IN MILLIMETERS SURFACE FINISH TOLERANCES: LINEAR: ANGULAR:				FINISH:		DEBUR AND BREAK SHARP EDGES		DOWNSCALE DRAWING		REVISION	
DRAWN:				NAME		SIGNATURE		DATE		TITLE	
CHKD:										滚柱导轨	
APP'VD:											
MFG:											
QA:											
								MATERIAL:		DWG NO.	
								WEIGHT:		SCALE 1:4	
										SHEET 1 OF 1	
										A3	

F8 - B



F8 - A

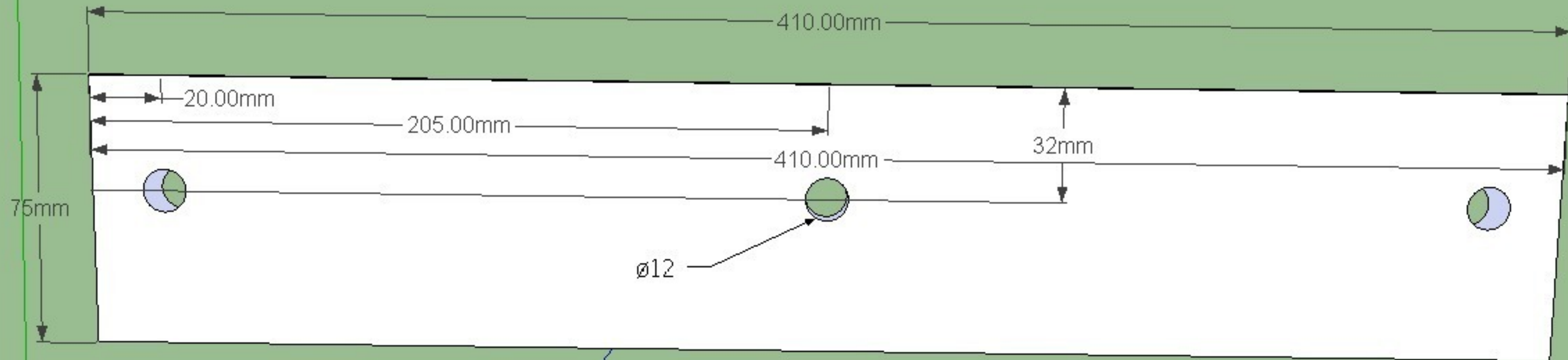


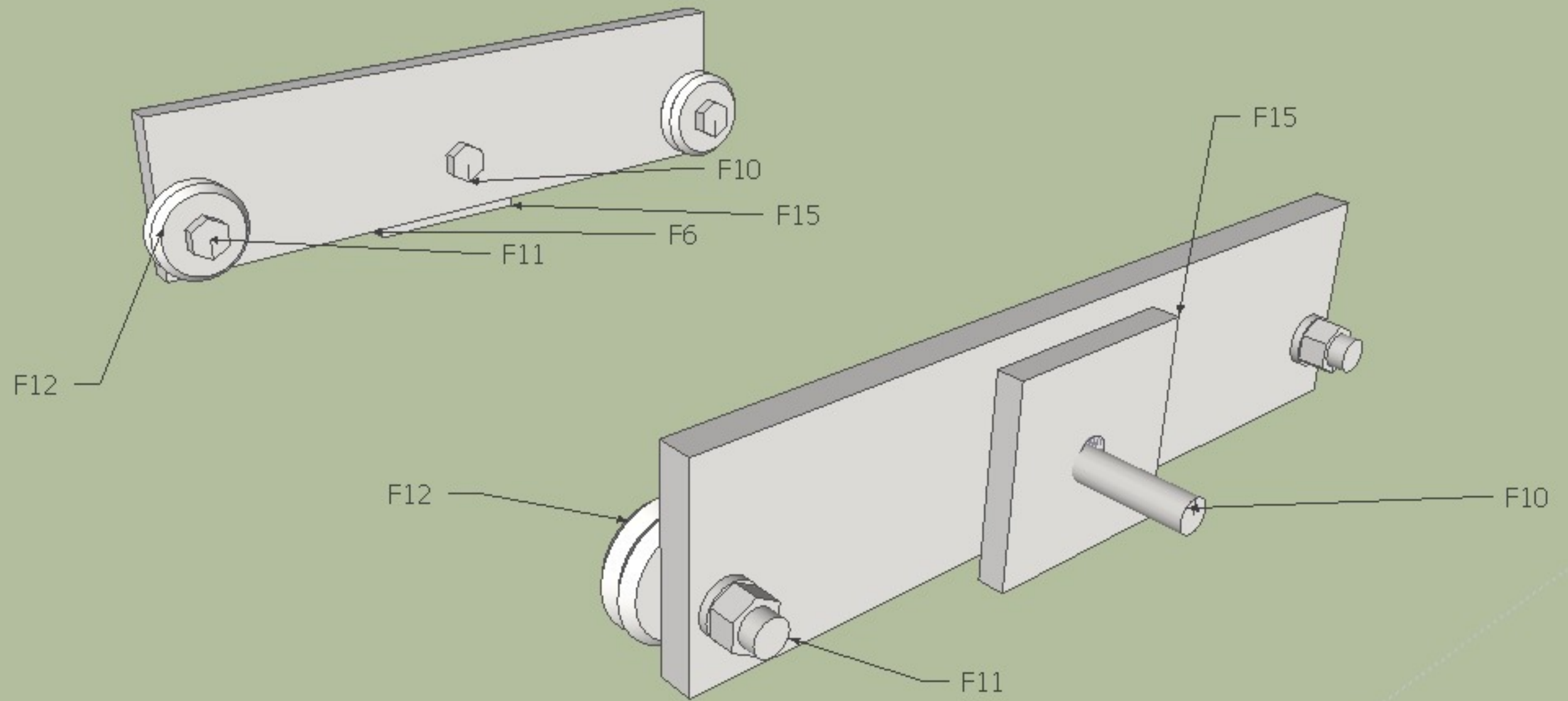
1350mm

80mm

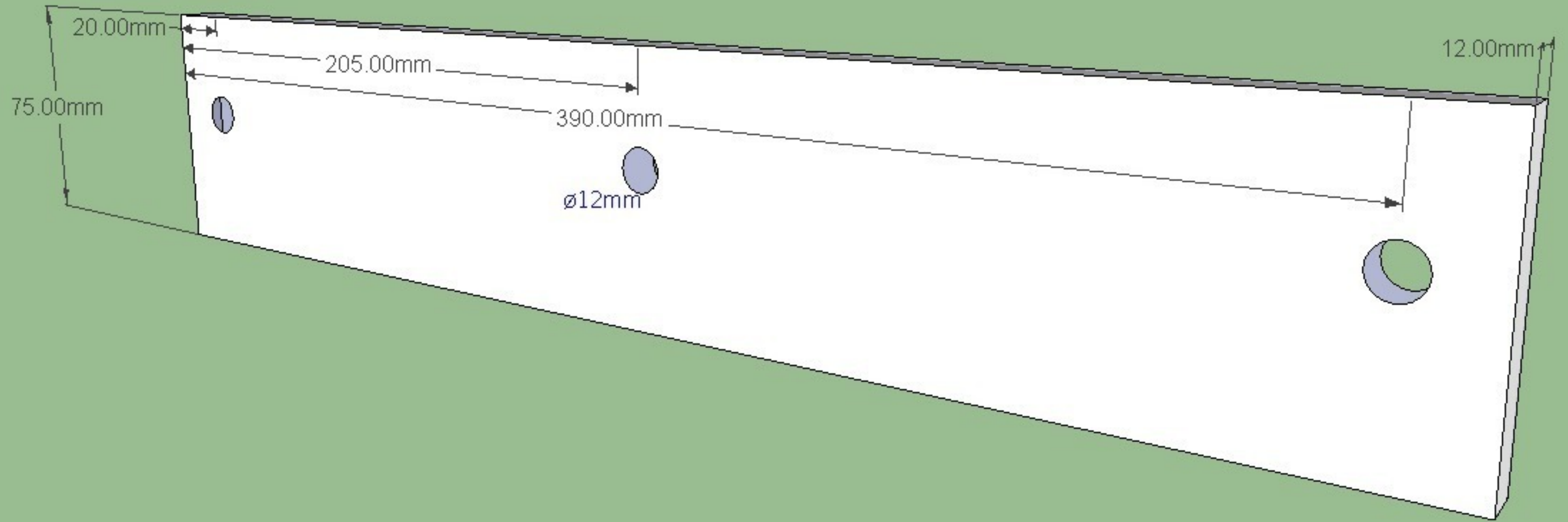
590mm

F6

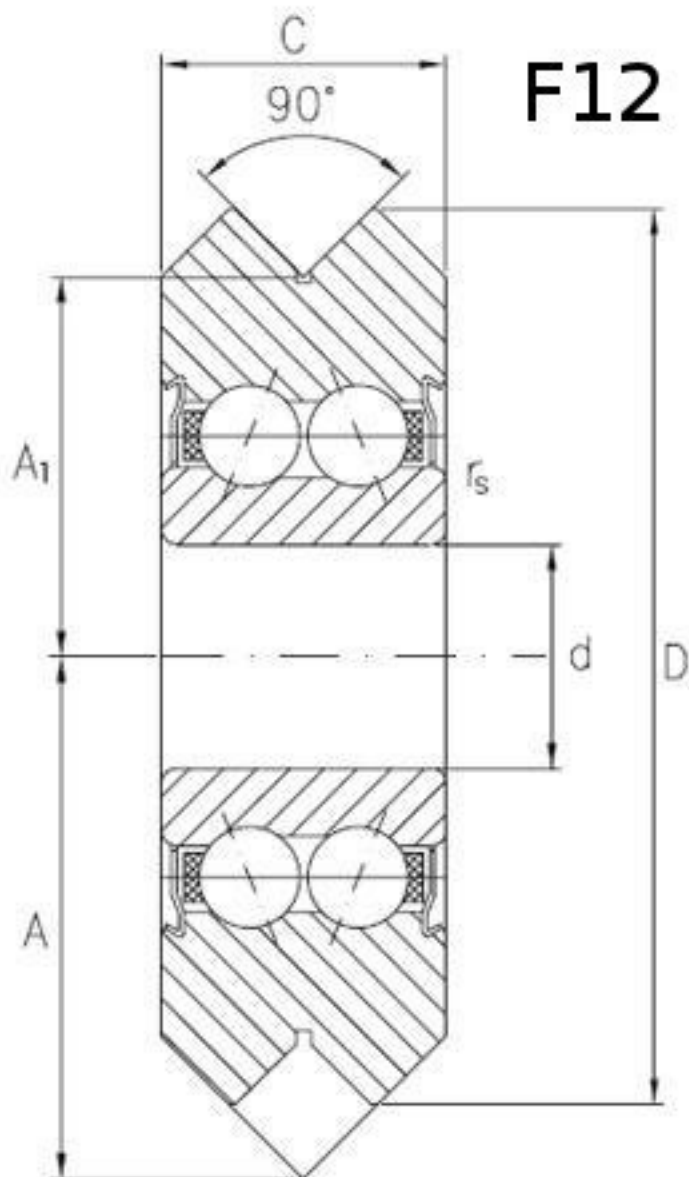




F6



F12



RM3-2RS 12mm V Groove Guide Bearing, bearing is a Sealed

- Item: RM3-2RS Bearing
- Type: V Groove Guide Bearing
- Quantity: One bearing
- Dynamic load rating Cr: 5,530 N
- Static load rating Cor: 5,200 N
- Limiting Speed:
 - Grease Lubrication: 31,000 RPM

F12

Dimensions (mm)					
d	D	A	C	A1	rs
12	45.72	26.98	15.88	19.05	0.6

