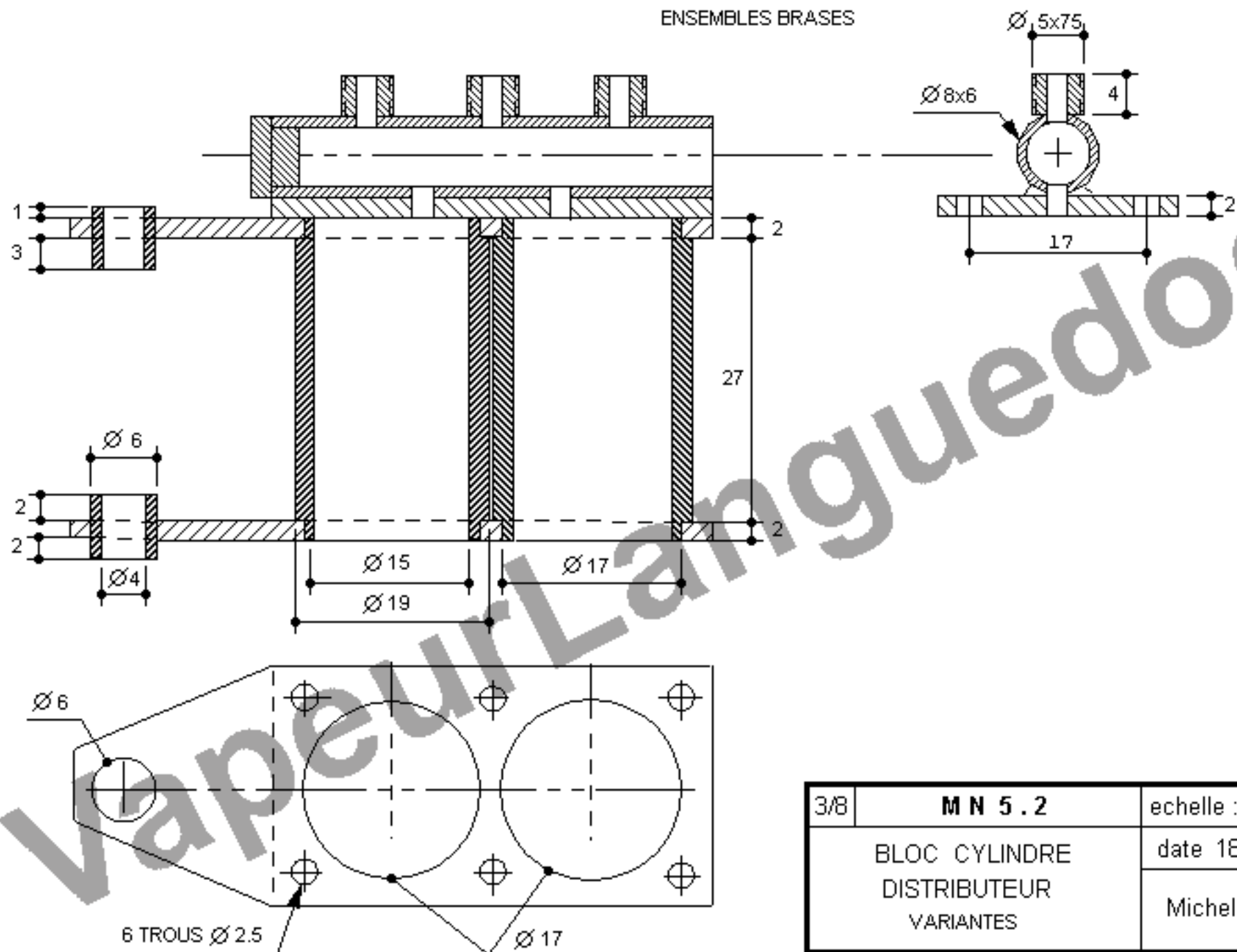


couple engrenages coniques acier  
 rapport 1/1  
 disponibles chez l'OCTANT  
 référence : W 47 15

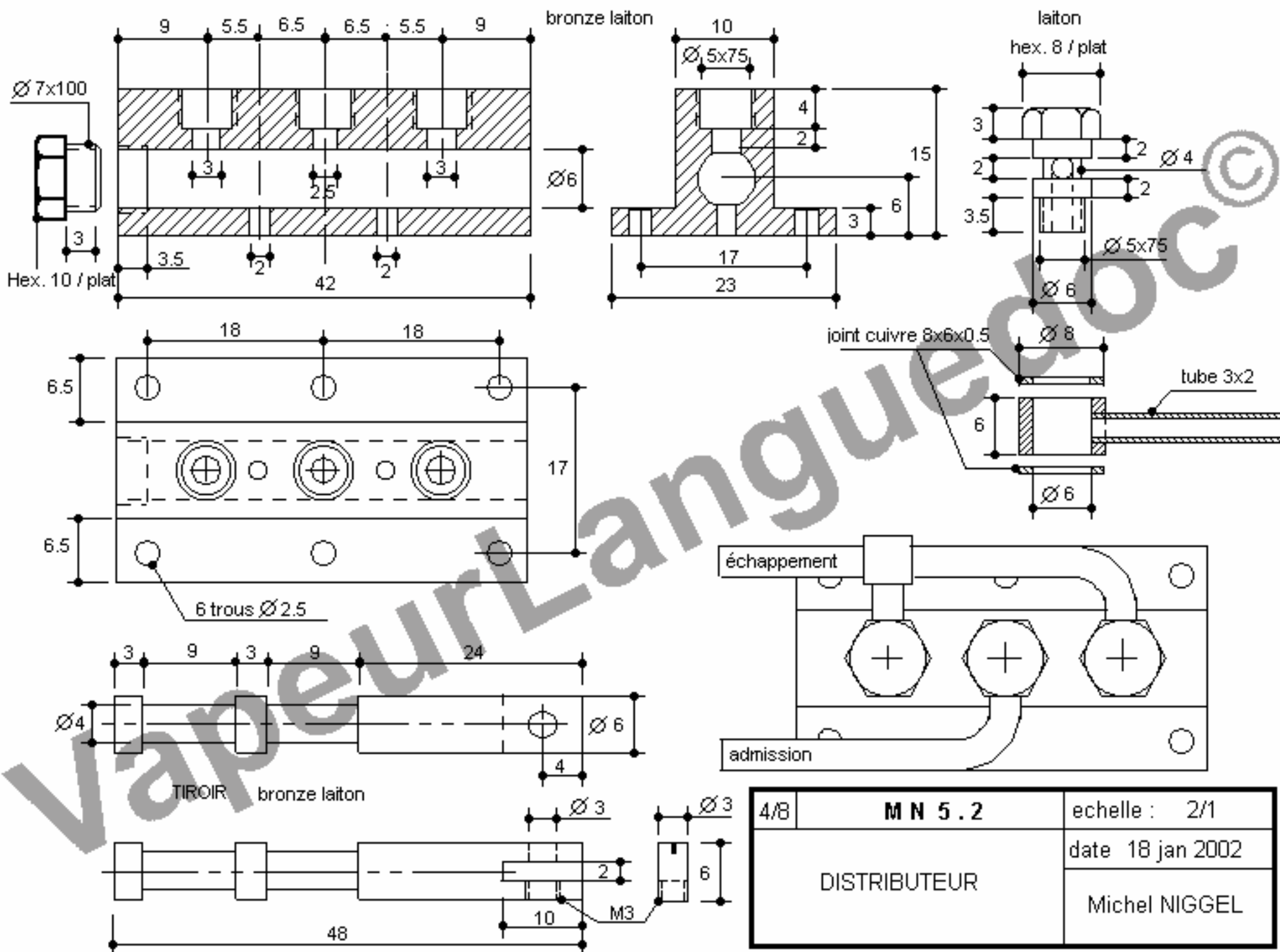
1/8	<b>M N 5 . 2</b>	echelle : 2/1
ENSEMBLE		date 18 jan 2002
		Michel NIGGEL



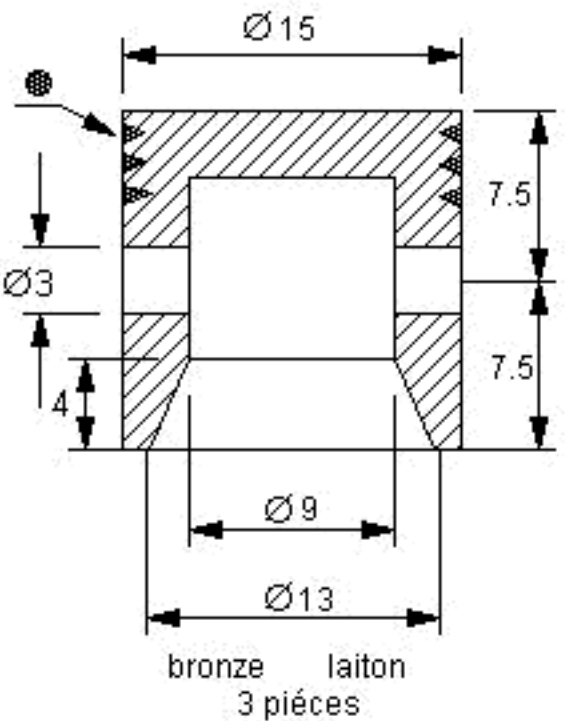
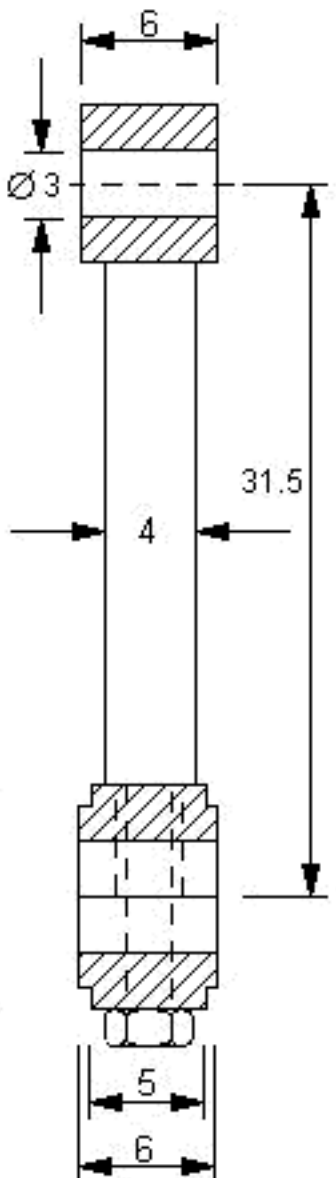
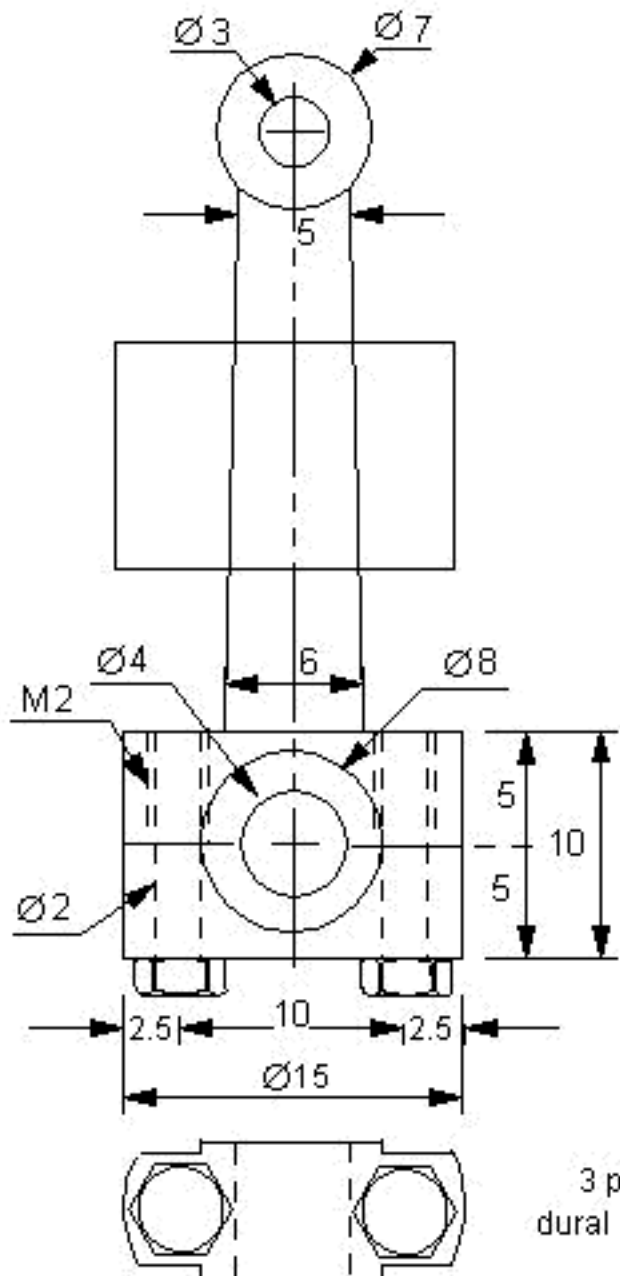
## ENSEMBLES BRASES



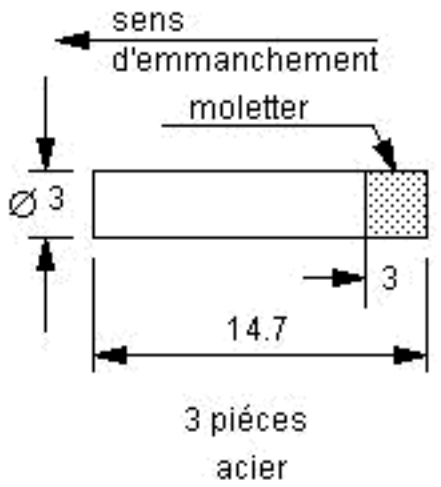
3/8	<b>M N 5.2</b>	echelle : 2/1
BLOC CYLINDRE DISTRIBUTEUR VARIANTES		date 18 jan 2002
		Michel NIGGEL



4/8	<b>M N 5.2</b>	echelle : 2/1
DISTRIBUTEUR		date 18 jan 2002
		Michel NIGGEL

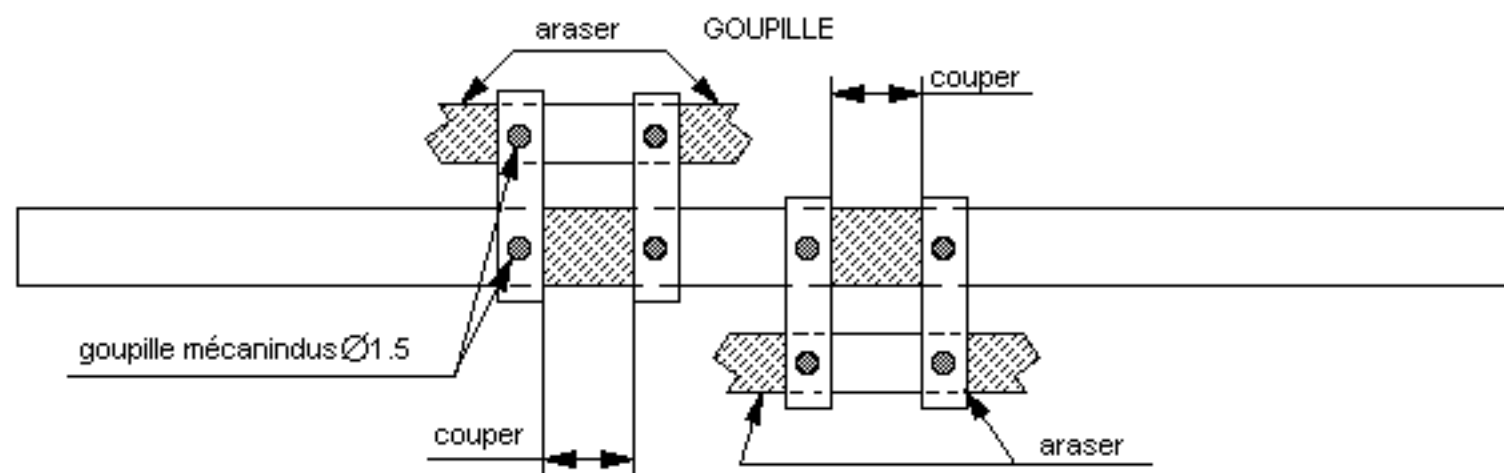
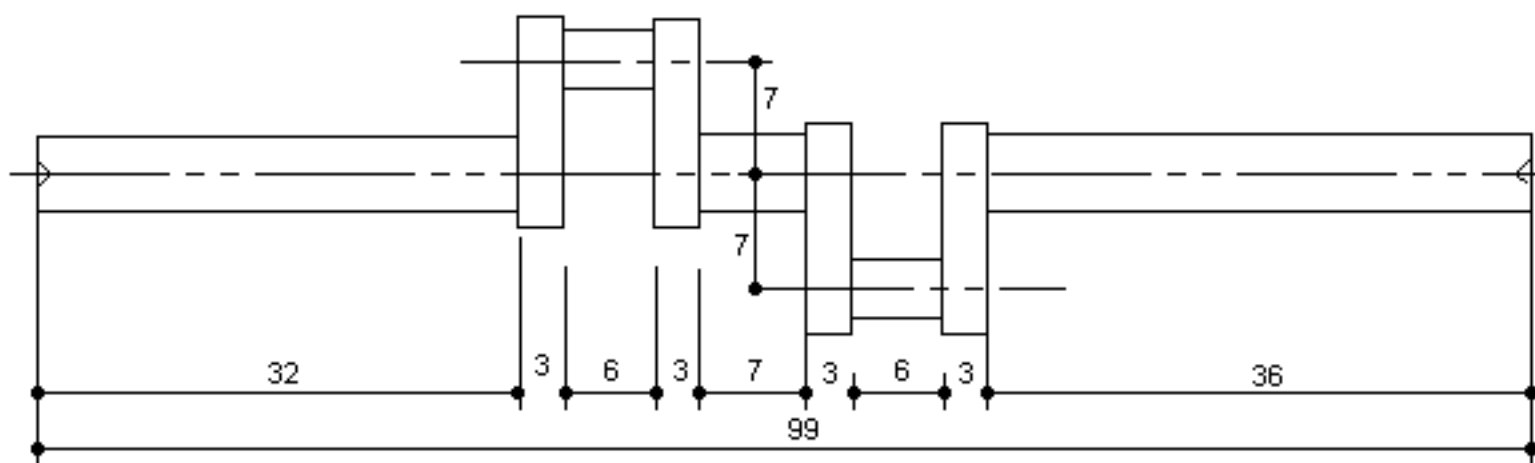


● 3 rainures à 60° prof : 0.5

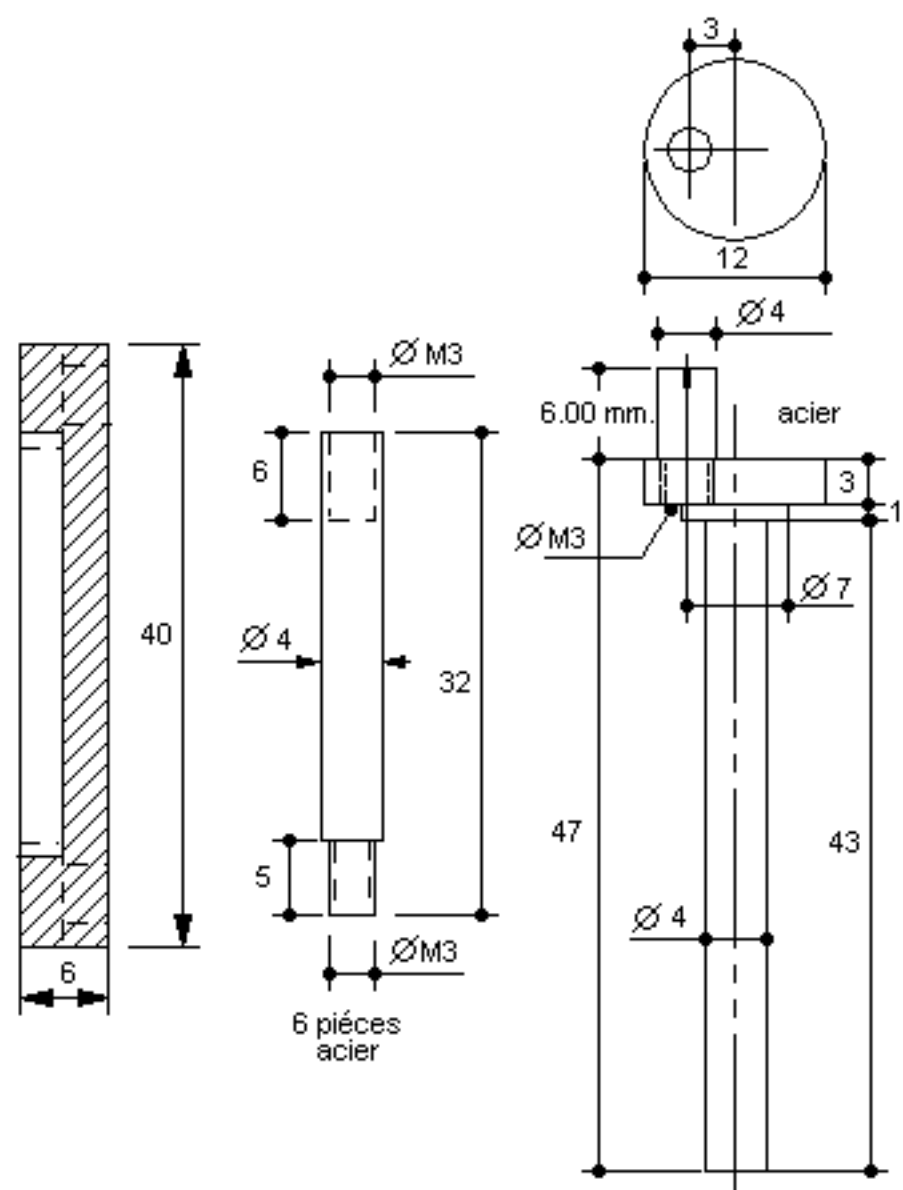
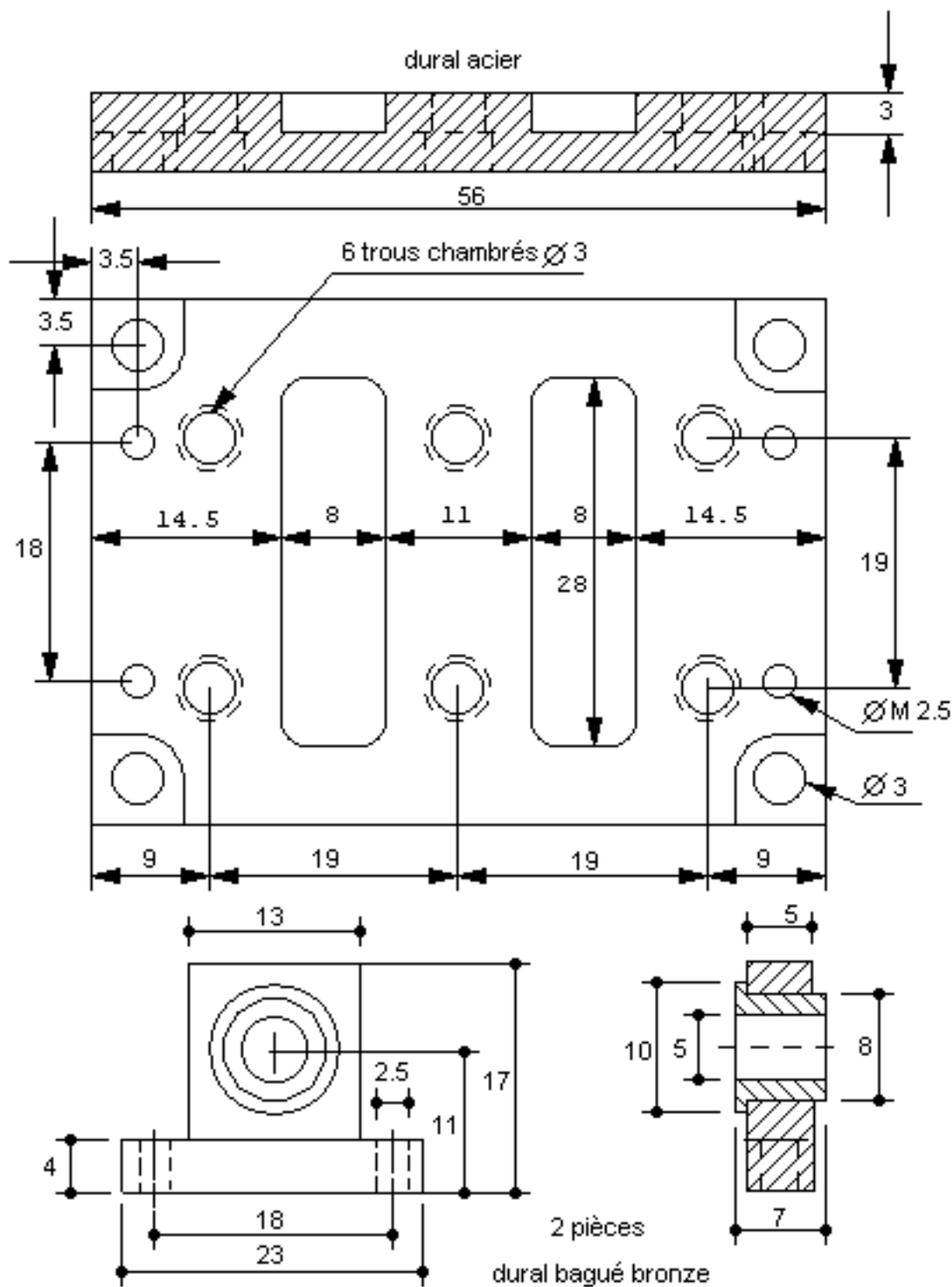


5/8	<b>M N 5.2</b>	echelle : 3/1
BIELLE		date 18 jan 2002
PISTON		Michel NIGGEL

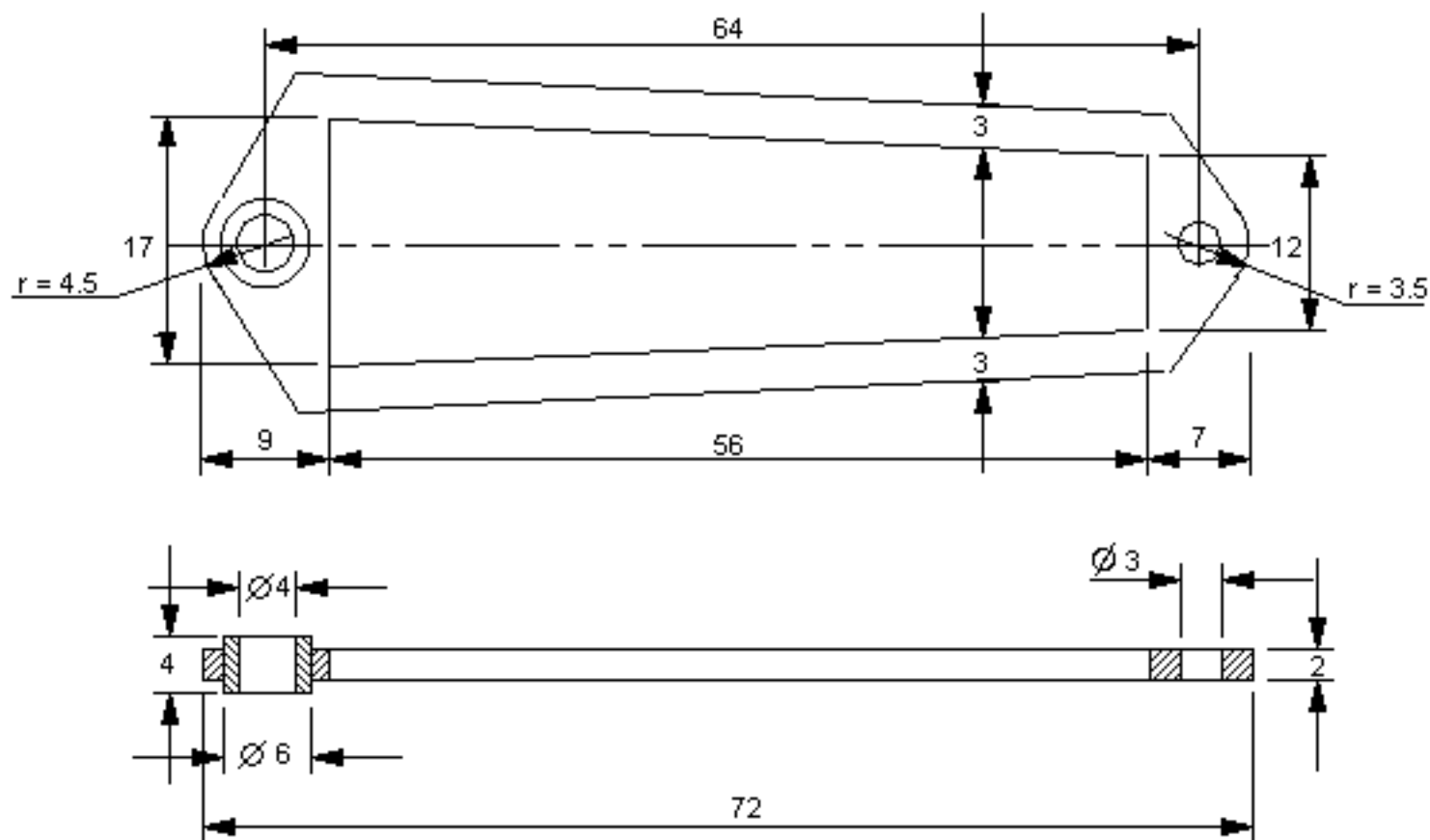
MONOBLOC



6/8	<b>M N 5.2</b>	echelle : 2/1
VILEBREQUIN		date 18 jan 2002
		Michel NIGGEL

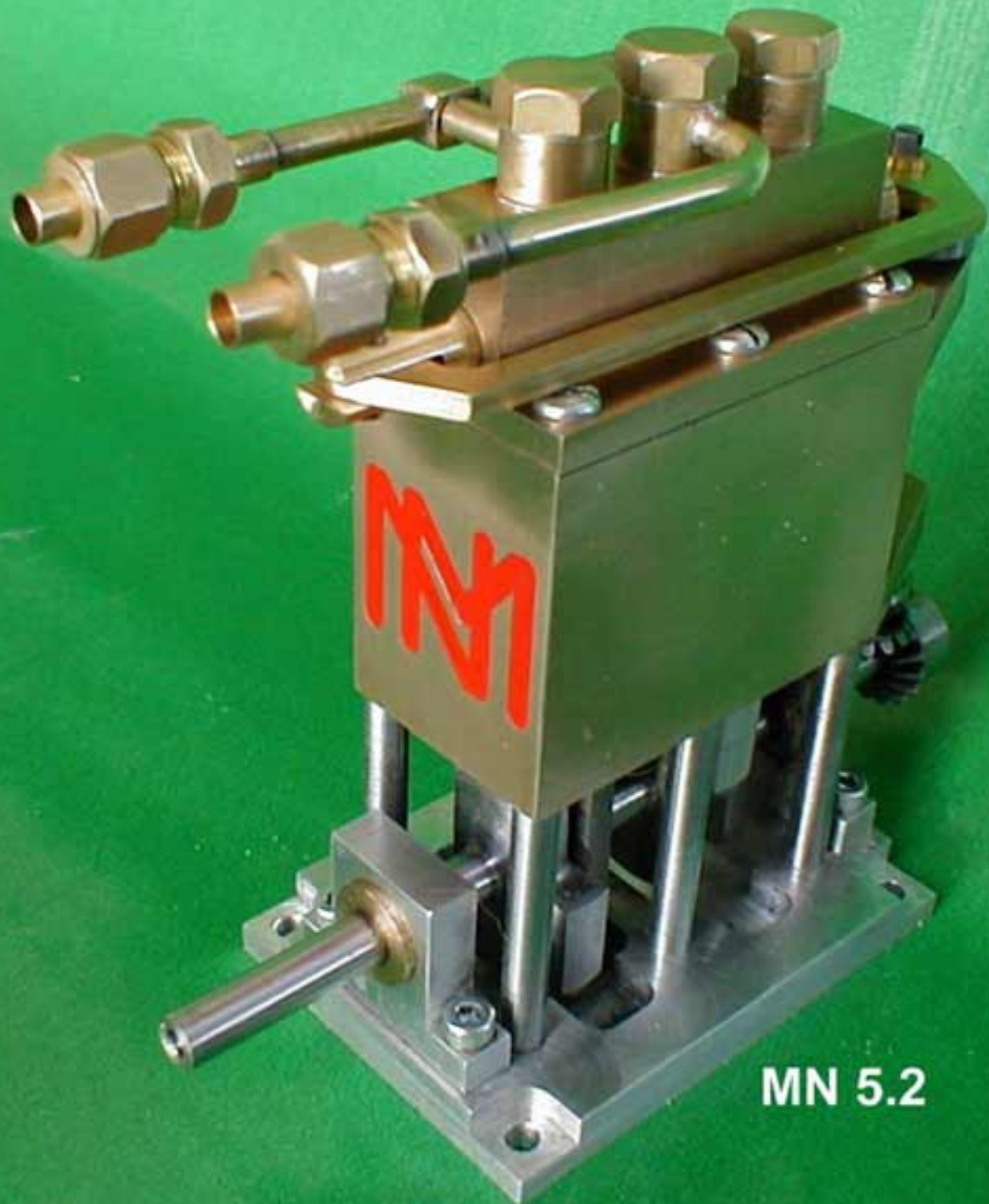


7/8	<b>M N 5.2</b>	echelle : 2/1
SOCLE PALIERS		date 18 jan 2002
		Michel NIGGEL



8/8	<b>M N 5.2</b>	echelle : 2/1
LYRE		date 18 jan 2002
		Michel NIGGEL





MN 5.2





